

# 12V inverter input current should be very large





## Overview

---

### Are inverters too big?

Inverters play a crucial role in converting DC power to AC power, but choosing the right size is essential for optimal performance. In this article, we'll explore the potential implications of using an inverter that is too big for your power needs, shedding light on the effects and considerations associated with oversized inverters.

### What size inverter for a 12V 200Ah battery?

For a 12V 200Ah battery (2.4kWh), a 2000W inverter is ideal. Formula: Inverter Wattage  $\leq$  (Battery Voltage  $\times$  Ah Rating  $\times$  0.8). Factor in surge power needs but prioritize sustained loads. Always check the battery's max discharge rate (C-rate) to avoid exceeding safe limits. When sizing for 24V or 48V systems, recalculate using the higher voltage.

### What wattage Inverter should I use?

Match the inverter's continuous wattage rating to the battery's discharge capacity. For a 12V 200Ah battery (2.4kWh), a 2000W inverter is ideal. Formula: Inverter Wattage  $\leq$  (Battery Voltage  $\times$  Ah Rating  $\times$  0.8). Factor in surge power needs but prioritize sustained loads.

### What is a maximum input current in a PV inverter?

1. Maximum Input Current Definition: The maximum operating current allowed to pass through the PV side of an inverter. The input current is especially critical in scenarios with high peak power currents, such as those involving thin-film PV modules.



## 12V inverter input current should be very large

---



### [Decoding Inverter Parameters \(Part I\)](#)

The inverter's DC input current should always stay within its maximum limit. If the PV module's output current exceeds this limit, it may lead to current-limited operation and potential inverter damage, reducing ...

[Learn More](#)

### [What Happens If the Inverter Is Too Big](#)

Inverters play a crucial role in converting DC power to AC power, but choosing the right size is essential for optimal performance. In this article, we'll explore the potential implications of using an inverter that is ...

[Learn More](#)



### [What Happens If Your Inverter Is Too Big? Risks, Solutions](#)

An oversized power inverter can undermine the efficiency, cost-effectiveness, and longevity of your power system. While it might seem like a "safer" choice, improper sizing ...

[Learn More](#)

### [Decoding Inverter Parameters \(Part I\)](#)

The inverter's DC input current should always stay within its maximum limit. If the PV module's output current exceeds this limit, it may lead to current-limited operation and ...



[Learn More](#)



### [How to Choose the Right Inverter Size for Solar Battery](#)

Discover how to choose the right inverter size for your home, calculate inverter capacity accurately, and avoid common mistakes to ensure efficient solar power performance.

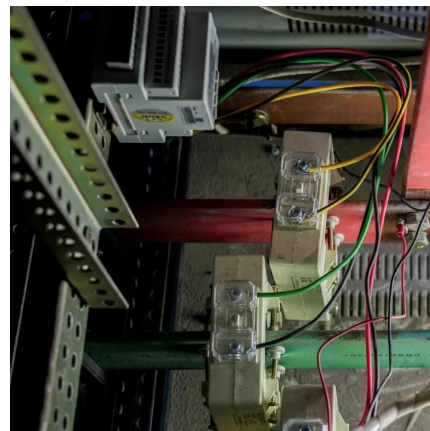
[Learn More](#)



### [How Many Amps Does an Inverter Draw?](#)

Current draw calculations for 300W to 5000W inverters in 12V, 24V and 48V systems, and common myths and questions about inverter current draw.

[Learn More](#)



### [How Many Amps Does an Inverter Draw?](#)

Current draw calculations for 300W to 5000W inverters in 12V, 24V and 48V systems, and common myths and questions about inverter current draw.

[Learn More](#)

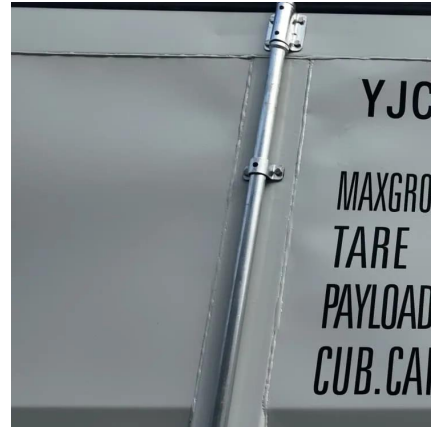




## Inverter Sizing: Can Your Inverter Be Too Big for Your Battery ...

An inverter can indeed be too big for your battery bank. An oversized inverter might waste energy and raise operating costs. To prevent this, ensure the inverter size matches your ...

[Learn More](#)



## [12V inverter input current should be very large](#)

In this article, we'll explore the potential implications of using an inverter that is too big for your power needs, shedding light on the effects and considerations associated with ...

[Learn More](#)

## [Can an Inverter Be Too Big for Your Battery System?](#)

How to Calculate the Right Inverter Size for Your Battery Match the inverter's continuous wattage rating to the battery's discharge capacity. For a 12V 200Ah battery (2.4kWh), a 2000W inverter ...

[Learn More](#)



## [What Happens If Your Inverter Is Too Big?](#)

An oversized power inverter can undermine the efficiency, cost-effectiveness, and longevity of your power system. While it might seem like a "safer" choice, improper sizing leads to hidden pitfalls. Here's a detailed ...

[Learn More](#)



## [What Happens If the Inverter Is Too Big](#)

Inverters play a crucial role in converting DC power to AC power, but choosing the right size is essential for optimal performance. In this article, we'll explore the potential ...

[Learn More](#)



## **Is your inverter too big? Understanding the downsides of ...**

An overview of the hidden losses caused by oversized inverters and the role of monitoring in evaluating system efficiency and component matching.

[Learn More](#)

## [Inverter Current Calculator](#)

The Inverter Current Calculator is a simple yet effective tool that helps users determine the current draw of an inverter based on its power rating and voltage. With just a few input values, users ...

[Learn More](#)



## **Contact Us**

---

For catalog requests, pricing, or partnerships, please visit:  
<https://www.fundacjawandea-imk.pl>



## Scan QR Code for More Information



<https://www.fundacjawandea-imk.pl>