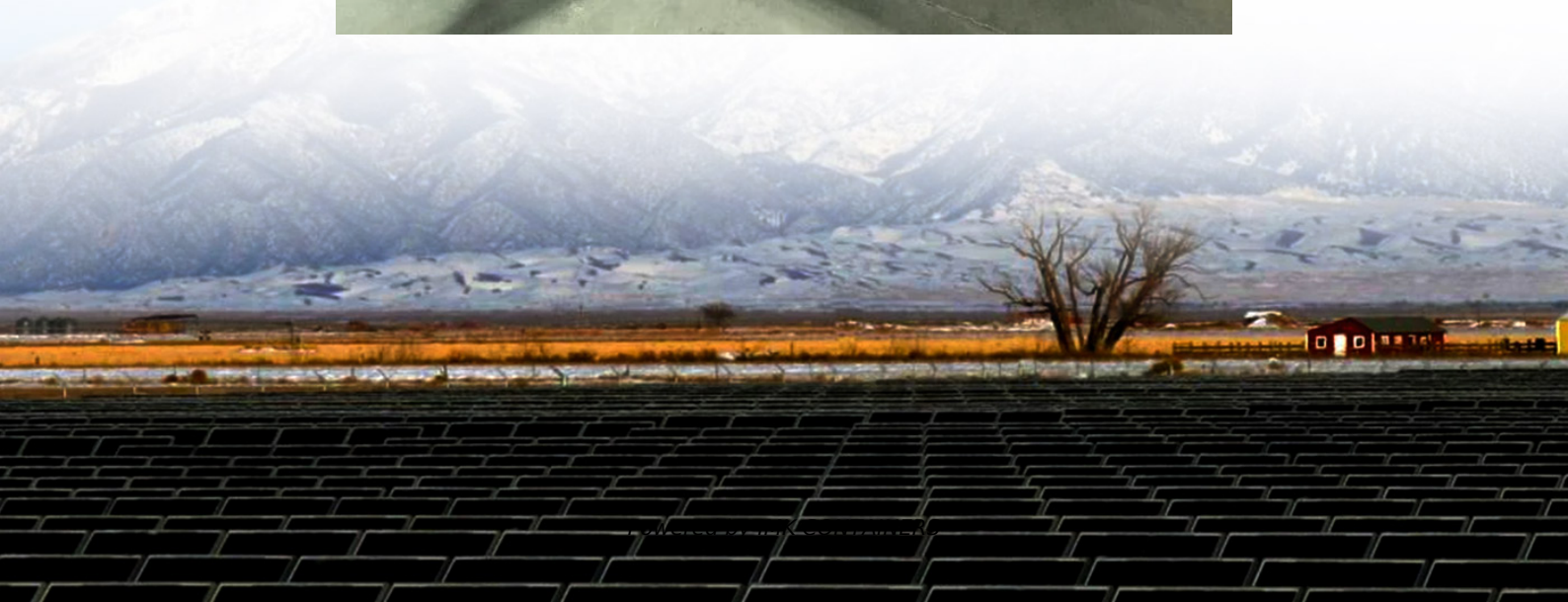


48v32ah lead acid battery with inverter





Overview

What is a 48V lead acid battery?

48V Lead-Acid Battery Voltage Chart (4th Chart). The 48V lead-acid battery state of charge voltage ranges from 50.92 (100% capacity) to 45.44V (0% capacity). Lead acid battery is comprised of lead oxide (PbO₂) cathode and lead (Pb) anode. The medium of exchange is sulphuric acid. Most common example of lead-acid batteries are car batteries.

What is a 48V lithium ion battery?

High output 48V lithium-ion battery designed for use on golf carts, electric outboards and 4-wheelers. Engineered with Lithium Iron Phosphate (LiFePO₄) technology, this battery has twice the power, half the weight, and lasts 4 times longer than a sealed lead acid battery.

What is a 24V lead acid battery?

Onward to 24 lead acid battery chart: We see the same lead-acid discharge curve for 24V lead-acid batteries as well; it has an actual voltage of 24V at 43% capacity. The 24V lead-acid battery voltage ranges from 25.46V at 100% charge to 22.72V at 0% charge; this is a 3.74V difference between a full and empty 24V battery.

How safe is the lithium-ion powerbrick 48v-32ah battery?

The Lithium-Ion PowerBrick battery 48V-32Ah offers high level of safety through the use of cylindrical cells in Lithium Ferro Phosphate technology (LiFePO₄ or LFP). PowerBrick 48V-32Ah integrates an innovative Battery Management System (BMS) in its casing to ensure a very high level of safety in use.



48v32ah lead acid battery with inverter



Scooter Battery Electric Bike Battery 12V32AH 48v32ah 60v32ah Lead Acid

Xupai originated from Zhejiang Changxing Yuquan Battery Factory in 1995 and is headquartered in Changxing, Zhejiang, the hometown of batteries in China. After more than 30 years of ...

[Learn More](#)

[48V 32Ah 1536Wh High-Capacity Li-ion Battery](#)

Trolling Motors Replace lead-acid batteries with this lightweight (14.7kg), high-energy-density (1536Wh) lithium battery. Consistent power output and rapid charging (0?-45? range) ...

[Learn More](#)



[PowerHouse Lithium 48V 32Ah Deep Cycle ...](#)

High output 48V lithium-ion battery designed for use on golf carts, electric outboards and 4-wheelers. Engineered with Lithium Iron Phosphate (LiFePo4) technology, this battery has twice the power, half the weight, ...

[Learn More](#)



[48V Lead-Acid and Lithium Battery 5.5kw ...](#)

48V Lead-Acid and Lithium Battery 5.5KW Pure Sine Wave Inverter with 80A MPPT Charge Controller Can be Parallel up to Nine ...

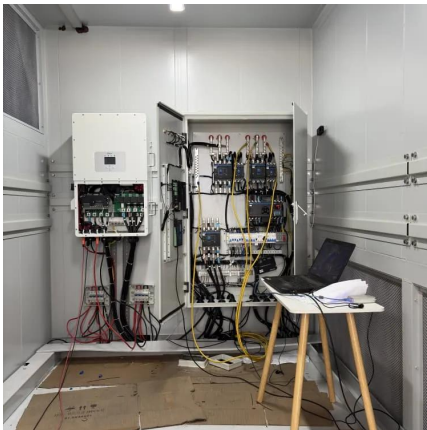
[Learn More](#)



[LFP PowerBrick+ 48V-32Ah](#)

The PowerBrick + range has been designed to replace lead-acid batteries advantageously, by offering a quadrupled energy density for an equivalent weight and size. Thanks to its ...

[Learn More](#)



48V EAGLE 2 , LiFePO4 , 32Ah , 1.63kWh , Golf & Utility Cart Battery

Upgrade your golf cart with the 48V Eagle 2 Lithium Battery Kit, a drop-in replacement for lead-acid batteries. This powerful 48-volt golf cart battery upgrade delivers ...

[Learn More](#)



[LiPuls 48V 32Ah GC2 LiFePO4 Deep Cycle...](#)

With an extended lifespan exceeding 10 years and 4000 cycles@100%DOD, perfectly replacing the traditional lead-acid batteries which only have 300 ...

[Learn More](#)



[Batterie lithium PowerBrick+ 48V 32Ah ...](#)



Choose the PowerBrick+ 48V 32Ah: a high-performance LiFePO4 lithium battery. Ideal for solar, wind and electric vehicle applications.

[Learn More](#)



[PowerHouse Lithium 48V 32Ah Deep Cycle Battery](#)

High output 48V lithium-ion battery designed for use on golf carts, electric outboards and 4-wheelers. Engineered with Lithium Iron Phosphate (LiFePo4) technology, this battery has ...

[Learn More](#)



[LFP PowerBrick+ 48V-32Ah](#)

The PowerBrick + range has been designed to replace lead-acid batteries advantageously, by offering a quadrupled energy density for an equivalent weight and size. Thanks to its technology, the lithium battery PowerBrick ...

[Learn More](#)



48V Lead-Acid and Lithium Battery 5.5kw Pure Sine Wave Inverter ...

48V Lead-Acid and Lithium Battery 5.5KW Pure Sine Wave Inverter with 80A MPPT Charge Controller Can be Parallel up to Nine inverters
Feature: 5500W Pure Sine Wave ...

[Learn More](#)



[48V 32Ah 1536Wh High-Capacity Li-ion ...](#)



Trolling Motors Replace lead-acid batteries with this lightweight (14.7kg), high-energy-density (1536Wh) lithium battery. Consistent power output and rapid charging (0?-45? range) maximize boating efficiency. Technical ...

[Learn More](#)



[Lithium Battery 48V-32Ah](#)

The PowerBrick range has been designed to replace lead-acid batteries advantageously, by offering a quadrupled energy density for an equivalent weight and size. ...

[Learn More](#)



[48v 32ah lead acid battery](#)

Access the best quality, efficient and rechargeable 48v 32ah lead acid battery at Alibaba for varied uses. These 48v 32ah lead acid battery are durable and certified.

[Learn More](#)



[Lithium Battery 48V-32Ah](#)

The PowerBrick range has been designed to replace lead-acid batteries advantageously, by offering a quadrupled energy density for an ...

[Learn More](#)



[Batterie lithium PowerBrick+ 48V 32Ah PB+48/32](#)



Choose the PowerBrick+ 48V 32Ah: a high-performance LiFePO4 lithium battery. Ideal for solar, wind and electric vehicle applications.

[Learn More](#)



[48V EAGLE 2 , LiFePO4 , 32Ah , 1.63kWh](#)

Upgrade your golf cart with the 48V Eagle 2 Lithium Battery Kit, a drop-in replacement for lead-acid batteries. This powerful 48-volt golf cart battery upgrade delivers exceptional range, fast charging, and zero ...

[Learn More](#)



[LiPuls 48V 32Ah GC2 LiFePO4 Deep Cycle Battery](#)

With an extended lifespan exceeding 10 years and 4000 cycles@100%DOD, perfectly replacing the traditional lead-acid batteries which only have 300-500 cycles. GC2 LiFePO4 batteries ...

[Learn More](#)



Contact Us

For catalog requests, pricing, or partnerships, please visit:
<https://www.fundacjawandea-imk.pl>



Scan QR Code for More Information



<https://www.fundacjawandea-imk.pl>