

Are 5G base stations separate and communicated





Overview

What is a 5G base station?

The 5G base station is the core equipment of the 5G network, providing wireless coverage and realizing wireless signal transmission between the wired communication network and the wireless terminal. The architecture and shape of the base station directly affect how the 5G network is deployed.

What is a 5G baseband unit?

The 5G baseband unit is responsible for NR baseband protocol processing, including the entire user plane (UP) and control plane (CP) protocol processing functions, and provides a backhaul interface (NG interface) with the core network and an interconnection interface (Xn interface) between base stations).

How does the architecture of a base station affect 5G?

The architecture and shape of the base station directly affect how the 5G network is deployed. In the technical standards, the frequency band of 5G is much higher than that of 2G, 3G and 4G networks.

Does 5G use more energy than 4G?

In particular, the 5G base station significantly requires more energy compared to the 4G system, especially when higher frequencies are in action. Due to the very short range of millimeter waves, several stations are required for getting complete coverage. This in turn, increases the overall energy consumption.



Are 5G base stations separate and communicated



[What is a 5G base station?](#)

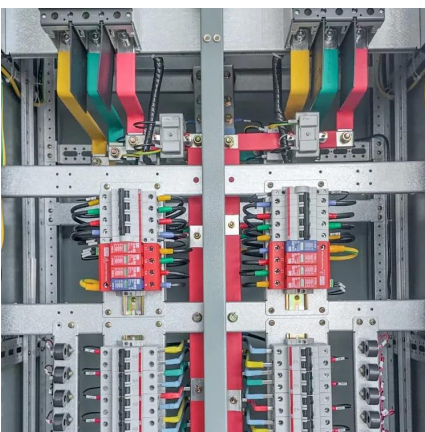
A 5G Base Station, also Known as A GNB (Next-Generation NodeB), is a fundamental component of the fifth-generation (5G) Wireless Network Infrastructure. It serves as a Critical Node for the Radio Access ...

[Learn More](#)

[Chapter 3: Basic Architecture -- 5G Mobile Networks: A ...](#)

The first is to connect new 5G base stations to existing 4G-based EPCs, and then incrementally evolve the Mobile Core by refactoring the components and adding NG-Core ...

[Learn More](#)



[What Is A 5G Base Station?](#)

Logical Architecture 5G base stations are mainly used to provide 5G air interface protocol functions and support communication with user equipment and core networks. ...

[Learn More](#)

[Learn What a 5G Base Station Is and Why It's Important](#)

A 5G base station is the heart of the fifth-generation mobile network, enabling far higher speeds and lower latency, as well as new levels of connectivity. Referred to as ...



[Learn More](#)



[How 5G Base Stations Are Powering the ...](#)

The dawn of the 5G era has ushered in unprecedented advancements in connectivity, transforming industries, lifestyles, and global economies. At the heart of this transformation lies the 5G base station--a ...

[Learn More](#)



Complete Guide to 5G Base Station Construction , Key Steps, ...

Explore how 5G base stations are built--from site planning and cabinet installation to power systems and cooling solutions. Learn the essential components, technologies, and ...

[Learn More](#)



What Is a Base Station? Exploring the Core of 5G Networks ...

Base stations are the core of mobile communication, and with the rise of 5G, thermal and energy challenges are increasing. This article explains the definition, structure, ...

[Learn More](#)

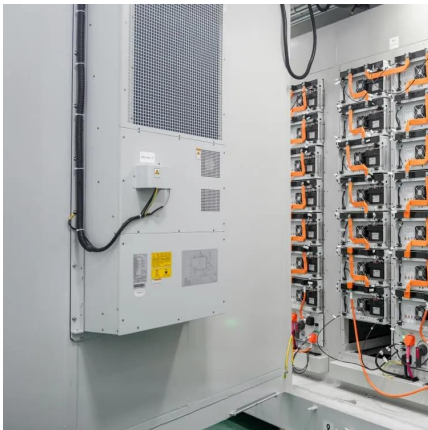




What is a 5G base station?

A 5G Base Station, also Known as A GNB (Next-Generation NodeB), is a fundamental component of the fifth-generation (5G) Wireless Network Infrastructure. It serves ...

[Learn More](#)



5g network station

Fronthaul and Backhaul: 5G base stations require high-speed and low-latency connections to the core network. Fiber optic cables are commonly used for both fronthaul ...

[Learn More](#)

Unveiling the 5G Base Station: The Backbone ...

Explore the inner workings of 5G base stations, the critical infrastructure enabling high-speed, low-latency wireless connectivity. Discover their components, architecture, enabling technologies, ...

[Learn More](#)



Chapter 3: Basic Architecture -- 5G Mobile ...

The first is to connect new 5G base stations to existing 4G-based EPCs, and then incrementally evolve the Mobile Core by refactoring the components and adding NG-Core capabilities over time.

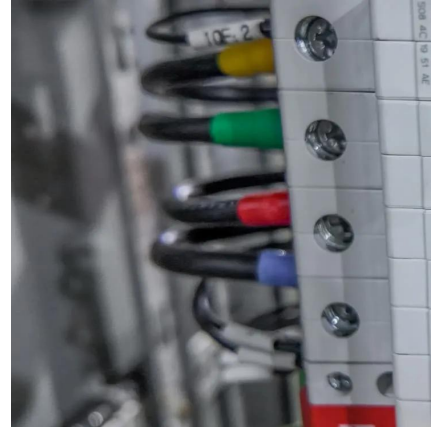
[Learn More](#)



[Complete Guide to 5G Base Station ...](#)

Explore how 5G base stations are built--from site planning and cabinet installation to power systems and cooling solutions. Learn the essential components, technologies, and challenges behind 5G ...

[Learn More](#)



[What Is A 5G Base Station?](#)

Logical Architecture 5G base stations are mainly used to provide 5G air interface protocol functions and support communication with user equipment and core networks. According to logical functions, 5G ...

[Learn More](#)

[Unveiling the 5G Base Station: The Backbone of Next-Gen ...](#)

Explore the inner workings of 5G base stations, the critical infrastructure enabling high-speed, low-latency wireless connectivity. Discover their components, architecture, ...

[Learn More](#)



How 5G Base Stations Are Powering the Future of Connectivity

The dawn of the 5G era has ushered in unprecedented advancements in connectivity, transforming industries, lifestyles, and global economies. At the heart of this ...

[Learn More](#)



Contact Us

For catalog requests, pricing, or partnerships, please visit:
<https://www.fundacjawandea-imk.pl>

Scan QR Code for More Information



<https://www.fundacjawandea-imk.pl>