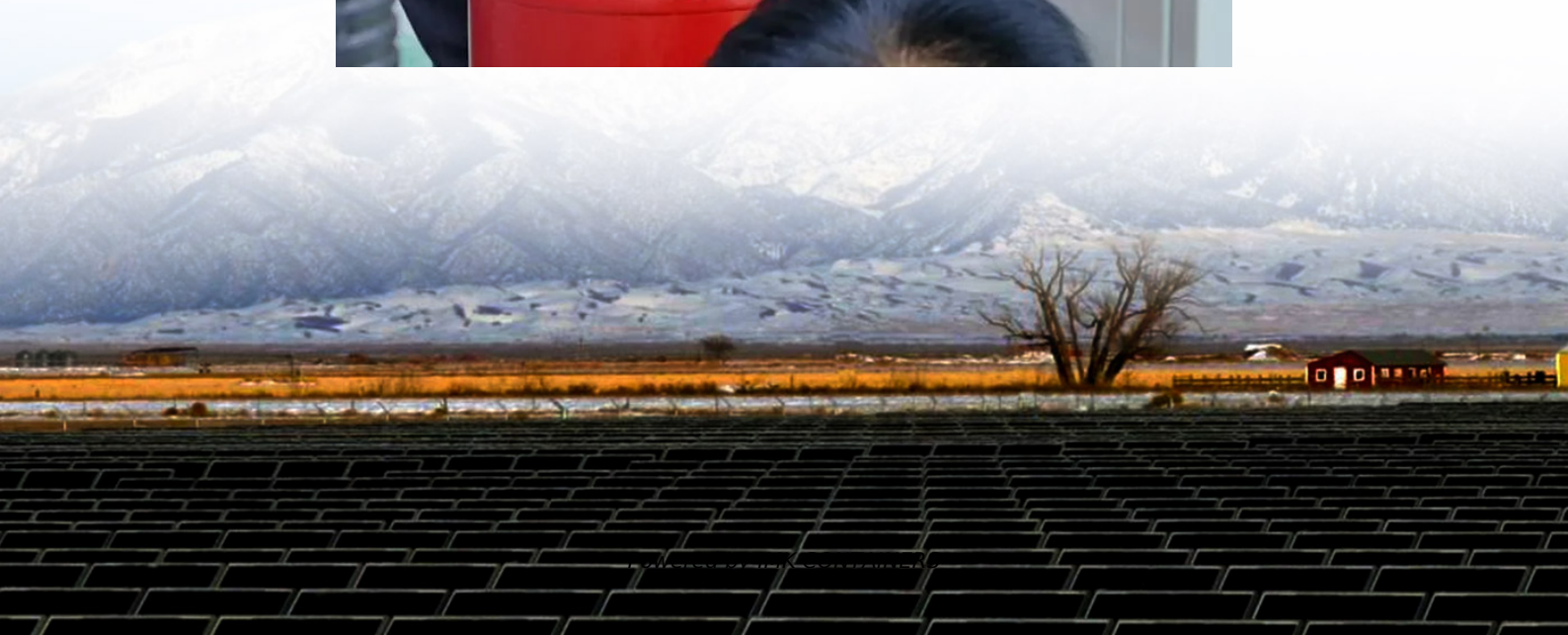


BMS battery system management





Overview

What is battery management system (BMS)?

Battery Management System (BMS) is the “intelligent manager” of modern battery packs, widely used in fields such as electric vehicles, energy storage stations, and consumer electronics.

How do battery management systems work?

Battery management system (BMS) is technology dedicated to the oversight of a battery pack, which is an assembly of battery cells, electrically organized in a row x column matrix configuration to enable delivery of targeted range of voltage and current for a duration of time against expected load scenarios.

Is a battery management system a good idea?

Yes. By keeping battery cells within safe voltage, current, and temperature ranges, a BMS reduces stress and degradation, which significantly extends the battery’s lifespan and ensures consistent performance over time. Why is a BMS important?

.

Why do lithium batteries need a BMS?

The BMS prevents your lithium battery’s voltage from going too high (causing overheating and gas release) or too low (leading to permanent damage). Damage occurs if you overcharge (cell voltage gets too high) or over-discharge (cell voltage gets too low) a lithium-ion battery cell. Overcharging occurs when recharging exceeds a battery’s safe range.



BMS battery system management



[What Is A BMS \(Battery Management System\)?](#)

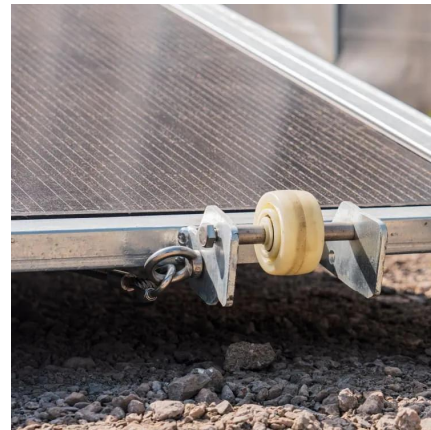
A Battery Management System (BMS) is the intelligent control unit that protects lithium batteries from overcharge, over-discharge, overheating, and short circuits. Learn how a ...

[Learn More](#)

[Battery Management System Working Principle Explained](#)

Battery Management System Working Principle and Its Role in Safe Battery Use Smarter battery monitoring solutions are critical as the demand for lithium-ion batteries rises ...

[Learn More](#)



[What Is a Battery Management System \(BMS\)?](#)

A Battery Management System (BMS) is an essential component in modern battery-powered applications, responsible for monitoring, protecting, and optimizing the ...

[Learn More](#)



[Battery Management System Guide: Functions, Circuits](#)

Comprehensive guide to Battery Management Systems (BMS), covering functions, circuits, components, and selection tips for safer, more reliable lithium-ion battery packs.



[Learn More](#)



[Battery Management System Working ...](#)

Battery Management System Working Principle and Its Role in Safe Battery Use Smarter battery monitoring solutions are critical as the demand for lithium-ion batteries rises globally across industries like ...

[Learn More](#)



[What is a Battery Management System?](#)

A Battery Management System (BMS) is an electronic control unit that monitors and manages rechargeable battery packs to ensure safe operation, optimal performance, and extended lifespan. This sophisticated ...

[Learn More](#)



[What is a Battery Management System \(BMS\)? Essential ...](#)

A Battery Management System (BMS) safeguards lithium-ion batteries by monitoring voltage, current, and temperature, preventing overcharge, discharge, and thermal ...

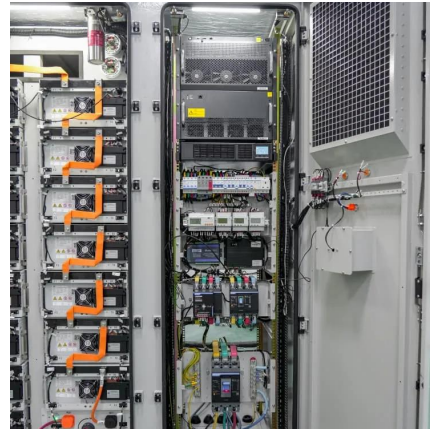
[Learn More](#)



What is a Battery Management System?

Battery management system (BMS) is technology dedicated to the oversight of a battery pack, which is an assembly of battery cells, electrically organized in a row x column ...

[Learn More](#)



What Is A BMS (Battery Management System)?

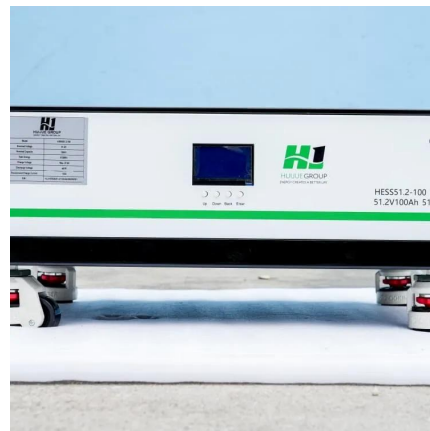
A battery management system is the "brain" of battery, which is critical for safety and operation. Here's a deep dive on the BMS.

[Learn More](#)

Battery Management System Guide: ...

Comprehensive guide to Battery Management Systems (BMS), covering functions, circuits, components, and selection tips for safer, more reliable lithium-ion battery packs.

[Learn More](#)



What is a Battery Management System? Complete Guide to BMS ...

A Battery Management System (BMS) is an electronic control unit that monitors and manages rechargeable battery packs to ensure safe operation, optimal performance, and ...

[Learn More](#)



[Battery Management System \(BMS\) Detailed ...](#)

Battery Management System (BMS) is the "intelligent manager" of modern battery packs, widely used in fields such as electric vehicles, energy storage stations, and consumer electronics. Its core task ...

[Learn More](#)



[What is a Battery Management System?](#)

Battery management system (BMS) is technology dedicated to the oversight of a battery pack, which is an assembly of battery cells, electrically organized in a row x column matrix configuration to enable ...

[Learn More](#)

[What Is a Battery Management System \(BMS\)?](#)

A battery management system (BMS) is a sophisticated electronic and software control system that is designed to monitor and manage the operational variables of ...

[Learn More](#)



[Battery Management System \(BMS\) Detailed Explanation: ...](#)

Battery Management System (BMS) is the "intelligent manager" of modern battery packs, widely used in fields such as electric vehicles, energy storage stations, and consumer ...

[Learn More](#)

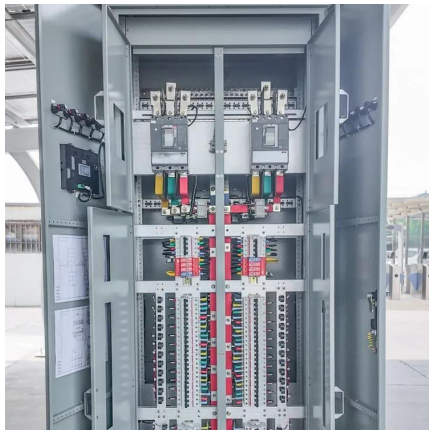


[What Is a Battery Management System](#)

...

A battery management system (BMS) is a sophisticated electronic and software control system that is designed to monitor and manage the operational variables of rechargeable batteries such as those ...

[Learn More](#)



[What Is BMS \(Battery Management System\) and Why Needs ...](#)

A Battery Management System (BMS) is the intelligent control unit that protects lithium batteries from overcharge, over-discharge, overheating, and short circuits. Learn how a ...

[Learn More](#)

[What Is a Battery Management System](#)

...

A Battery Management System (BMS) is an essential component in modern battery-powered applications, responsible for monitoring, protecting, and optimizing the performance of rechargeable ...

[Learn More](#)



Contact Us

For catalog requests, pricing, or partnerships, please visit:
<https://www.fundacjawandea-imk.pl>



Scan QR Code for More Information



<https://www.fundacjawandea-imk.pl>