

Can a 24v inverter be plugged into a 12v power supply





Overview

Can I use a 24V inverter on a 12V battery?

In conclusion, using a 24V inverter on a 12V battery is not advisable due to voltage mismatch, power limitations, and safety hazards. For a successful solar energy system, it's essential to use components that are compatible with each other, ensuring optimal performance and longevity.

Should I upgrade my battery system to a 24V inverter?

If you have your heart set on a 24V inverter, consider upgrading your battery system to a 24V configuration. While this may involve some additional investment, it can significantly enhance the performance of your solar power setup.

Can a 12V solar panel use a 24V inverter?

A 12V solar panel must use with a 12V inverter and a 24V solar panel must use with a 24V inverter. On top of that a series connection is required to maintain the same voltage between the battery, inverter and the solar panel. Check out 12V, 24V and 48V inverters here. To keep things simple, just remember to keep the voltage the same.

How many watts a 12V Inverter should I use?

If you need less than 1000 watts, a 12V inverter will do. If you require between 1000 to 3000 watts, it is best to use a 24V inverter. For power requirements greater than 3000 watts, 48V inverters are recommended. To put it another way, if the demand goes exceeds 140 amps you should opt for 48V.



Can a 24v inverter be plugged into a 12v power supply



[Can I Use 24V Inverter with 12V Battery](#)

Wondering if a 24V inverter can be used with a 12V battery? Learn the truth and explore key considerations before making your decision.

[Learn More](#)



[Basic: Can I Use a 24V Inverter in a 12v Solar ...](#)

Conclusion In conclusion, using a 24V inverter on a 12V battery is not advisable due to voltage mismatch, power limitations, and safety hazards. For a successful solar energy system, it's essential to use ...

[How To Get 12 Volts From a 24 Volt System](#)

A buck converter is a type of DC-DC converter that steps down voltage from a higher level (24V) to a lower level (12V) while attempting to maintain efficiency. It works by ...

[Learn More](#)



Can I Use A 24V Inverter With A 12V Battery? Compatibility ...

Using a 24V inverter with a 12V battery is not recommended. This voltage mismatch can create power limitations and pose safety hazards. For an effective solar energy system, ...

[Learn More](#)



[Learn More](#)



[Can I Run a 12V Inverter on a 24V Battery?](#)

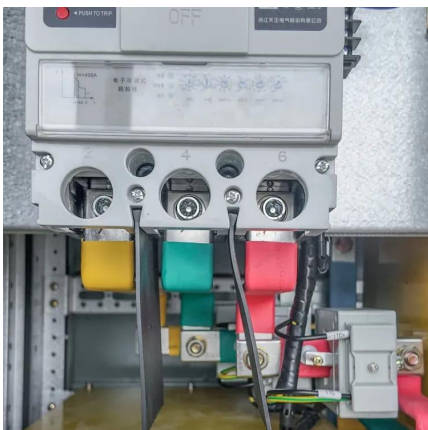
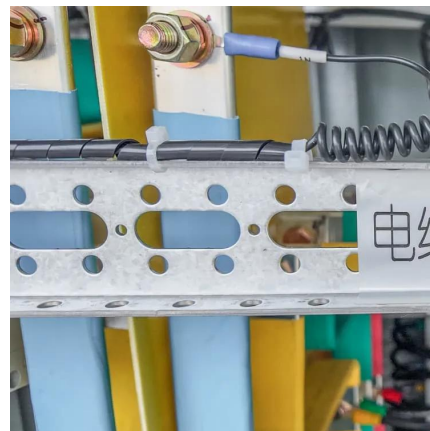
Application Scenario: Provide power support in a small store or temporary work site. System Options: Inverter: Use a high power 12V inverter with 2000W and above to support the operation of multiple ...

[Learn More](#)

Basic: Can I Use a 24V Inverter in a 12v Solar Battery system

Conclusion In conclusion, using a 24V inverter on a 12V battery is not advisable due to voltage mismatch, power limitations, and safety hazards. For a successful solar energy ...

[Learn More](#)



[Can I Put 24 Volts into a 12 Volt Inverter?](#)

In solar PV arrays, RV (recreational vehicle) conversions, and portable power stations, the inverter is the heart of the system--transforming direct current (DC) into alternating current ...

[Learn More](#)

[How To Get 12 Volts From a 24 Volt System](#)



A buck converter is a type of DC-DC converter that steps down voltage from a higher level (24V) to a lower level (12V) while attempting to maintain efficiency. It works by switching a transistor on and off rapidly, ...

[Learn More](#)



[Can a 24V power supply be used to supply a 12V device?](#)

In electronic equipment and power systems, a mismatch between the power supply and the voltage requirements of the equipment is a common problem. Especially in a power supply ...

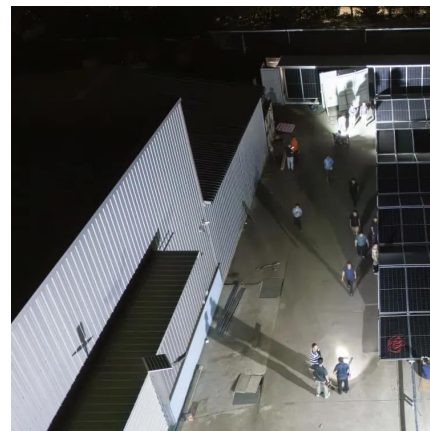
[Learn More](#)



Can I Run A 12V Inverter On A 24V Battery? Solutions And ...

To use a 12V inverter with a 24V battery, a DC-DC buck converter can be employed. This device reduces the 24V input down to 12V for the inverter, ensuring safe and ...

[Learn More](#)



[Can You Use a 24 volt inverte With a 12V Battery System?](#)

In this guide, we'll unpack why the mismatch hurts, safe workarounds, gear lists, cost math, and simple checks so you power up without smoke. 24 Volt Inverter on 12V Battery: ...

[Learn More](#)



[Can I Run a 12V Inverter on a 24V Battery?](#)



Application Scenario: Provide power support in a small store or temporary work site. System Options: Inverter: Use a high power 12V inverter with 2000W and above to ...

[Learn More](#)



[Can a 24V power supply be used to supply a ...](#)

In electronic equipment and power systems, a mismatch between the power supply and the voltage requirements of the equipment is a common problem. Especially in a power supply environment, technicians may encounter a ...

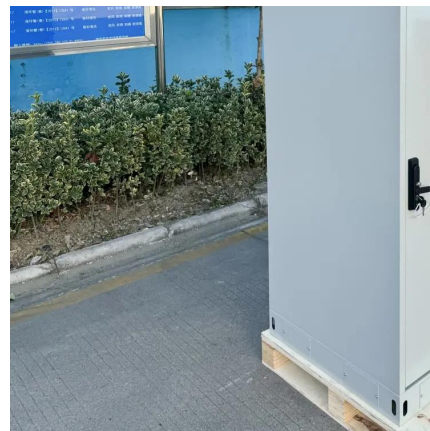
[Learn More](#)



[Can a 24v inverter be plugged into a 12v power supply](#)

Can a power inverter work with a 24V battery?
While affordable power inverters are available for use with 24V batteries and battery banks, other useful items are much more expensive if rated ...

[Learn More](#)



Contact Us

For catalog requests, pricing, or partnerships, please visit:
<https://www.fundacjawandea-imk.pl>



Scan QR Code for More Information



<https://www.fundacjawandea-imk.pl>