

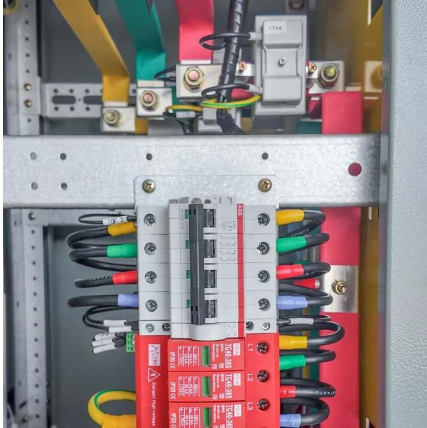
# Commutation of three-phase inverter





## Commutation of three-phase inverter

---



### [NHS pension commutation](#)

Will your father potentially leave a dependent? Only my mother - the NHS pension pays a survivors pension, but it appears that this is 50% of the original pre-commutation ...

### [Learn More](#)

### [Commutation factors and planning](#)

As for commutation rates - how does the pension increase once in payment/what's the Normal Retirement Age for each of the schemes? Are the commutation rates age related? ...

### [Learn More](#)



### [Affichage écran: "Attention Commutation mode veille"](#)

Bonsoir, lorsque j'allume mon pc mon écran affiche "Attention Commutation mode veille " et cela reste comme ça . Que signifie ce problème ? Sachant que j'ai brancher ma tour ...

### [Learn More](#)

### [Commutation rate is it good bad or ugly](#)

Commutation rate is it good bad or ugly  
HillsideRetired Posts: 33 Forumite 28 September 2024 at 11:08AM hi all one of my smaller DB pensions is coming up for payment at ...

### [Learn More](#)



[Please help me make sense of this commutation factor table](#)

I understand that people often look at the commutation factors to judge if a scheme is offering a generous term, so I decided to ask my provider for the details, and this is what ...

[Learn More](#)



### Final Salary Pension

Commutation is £21.47 (hence the reference to 'approx £21.50' in my previous post). Thanks, I had thought you needed the amount of the full pension to work out the ...

[Learn More](#)



[Inverse Commutation of Lump Sum](#)

Civil Service Pension Classic - Inverse Commutation of Lump Sum - Worth it? Eye2021 Posts: 22 Forumite 28 December 2021 at 5:15PM

[Learn More](#)





### [Commutation of Army Pension](#)

I retire from the Army next month after 22 years service and will receive a full pension. I will also have a commutation option of an additional (tax free) £16,761, but if I ...

[Learn More](#)



### [Commutation mode veille \[Résolu\]](#)

Bonjour, Mon ordi s'éteint régulièrement (souvent), et marque "commutation mode veille". Je suis obligé de débrancher la prise et ensuite de le rallumer. Il semblerait qu'un ...

[Learn More](#)

## Contact Us

---

For catalog requests, pricing, or partnerships, please visit:  
<https://www.fundacjawandea-imk.pl>

**Scan QR Code for More Information**



<https://www.fundacjawandea-imk.pl>