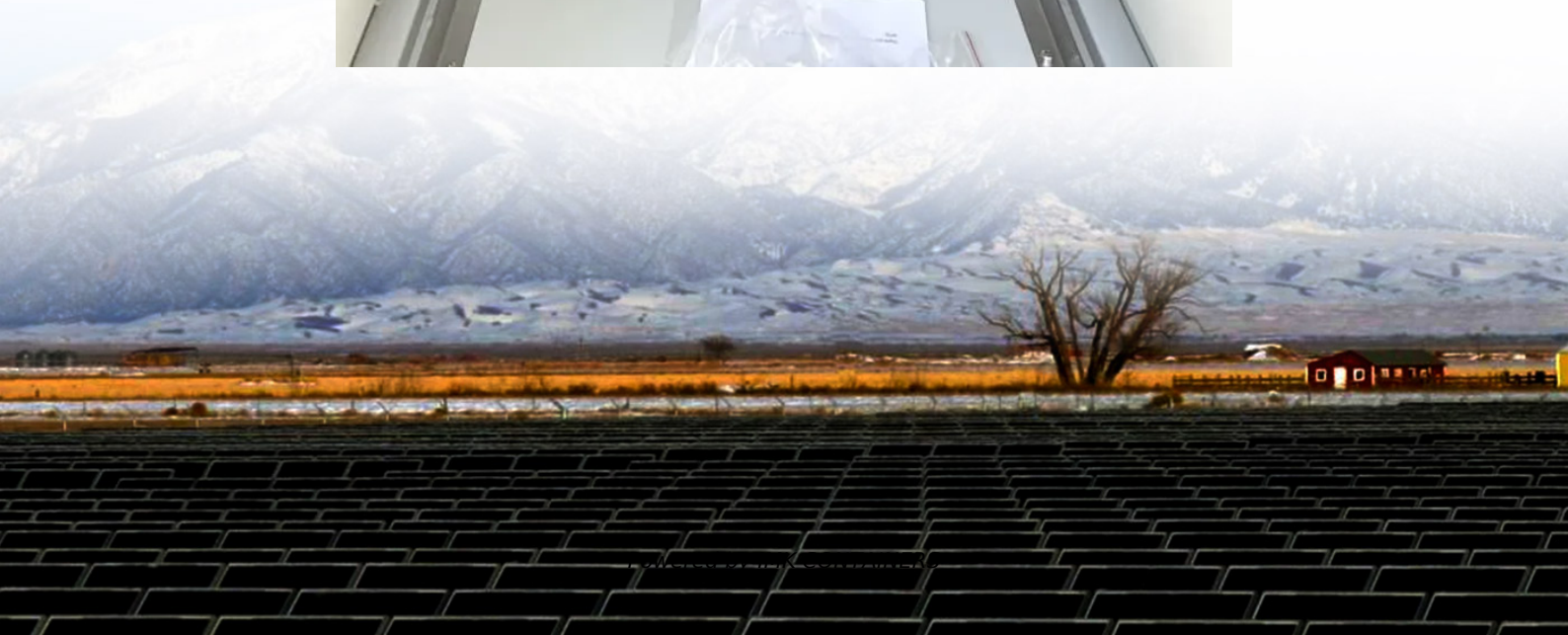


Does a 5G base station have an electromagnetic field





Does a 5G base station have an electromagnetic field



[The Measurement and Evaluation of the Electromagnetic ...](#)

Background measurement is the measurement of environmental electromagnetic field (EMF) before the installation of 5G base station while the working measurement is the ...

[Learn More](#)

[Installation of Base Stations and Radiation Safety](#)

The radiofrequency electromagnetic fields generated by radio base stations (including 5G base stations) for the provision of mobile services are a type of NIR. Other ...

[Learn More](#)



[Electromagnetic Field \(EMF\) measurements near 5G ...](#)

What we've found To date, we have carried out EMF measurements at 22 locations near 5G mobile phone base stations in 10 cities across the UK, including Belfast, ...

[Learn More](#)



[The Measurement and Evaluation of the ...](#)

The measurement resorts of environment electromagnetic fields with 5G base station. The t-test resorts of environment electromagnetic fields for 5G base station.

[Learn More](#)



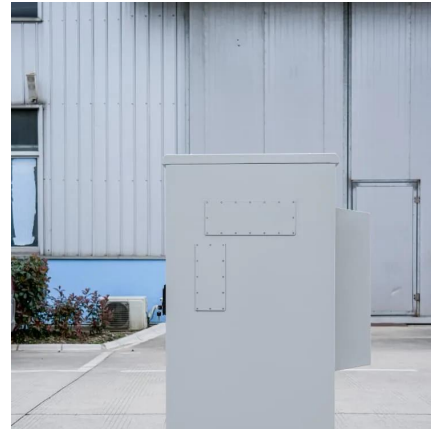
[5G, human exposure to electromagnetic fields \(EMF\) and ...](#)

Together with the introduction of mobile communication technologies, there has been some public concern about the potential health risks associated with the use of mobile ...

[Learn More](#)



[Human exposure to EMF from 5G base stations: analysis, ...](#)



5G Base Station Electromagnetic Field Strength Estimation ...

Recently, with the commercialization of 5G, a new electromagnetic field (EMF) evaluation methods is need. However, conventional EMF evaluation methods are only based ...

[Learn More](#)



[The Measurement and Evaluation of the Electromagnetic ...](#)

The measurement resorts of environment electromagnetic fields with 5G base station. The t-test resorts of environment electromagnetic fields for 5G base station.

[Learn More](#)



The use of broadband field probes for 5G exposure assessment is still possible under certain considerations and correcting the results considering the base station load and ...

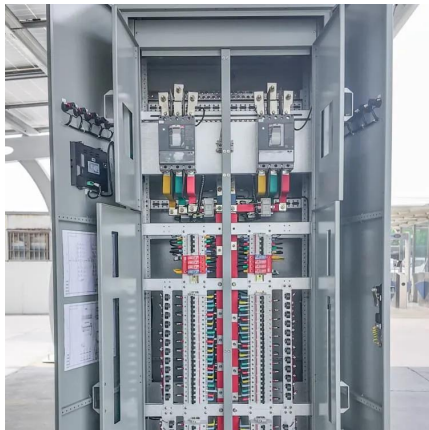
[Learn More](#)



Electromagnetic field exposure monitoring of commercial 28-GHz band 5G

In this work, the latest radio frequency electromagnetic field (EMF) exposure measurement results on commercial 28-GHz band 5G base stations (BSs) deployed in the ...

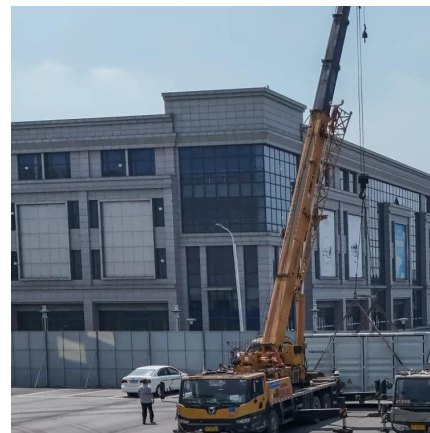
[Learn More](#)



A study on the ambient electromagnetic radiation level of 5G base

Knowledge of the electromagnetic radiation characteristics of 5G base stations under different circumstances is useful for risk prevention, assessment, and management. ...

[Learn More](#)



5G, human exposure to electromagnetic fields ...

Together with the introduction of mobile communication technologies, there has been some public concern about the potential health risks associated with the use of mobile phones and living near base ...

[Learn More](#)



5G equipment, safety standards and performance



Radio waves are used for communication in 5G. Like in previous mobile networks, 5G devices communicate with base stations by transmitting and receiving radio waves, or radio ...

[Learn More](#)



Contact Us

For catalog requests, pricing, or partnerships, please visit:
<https://www.fundacjawandea-imk.pl>

Scan QR Code for More Information



<https://www.fundacjawandea-imk.pl>