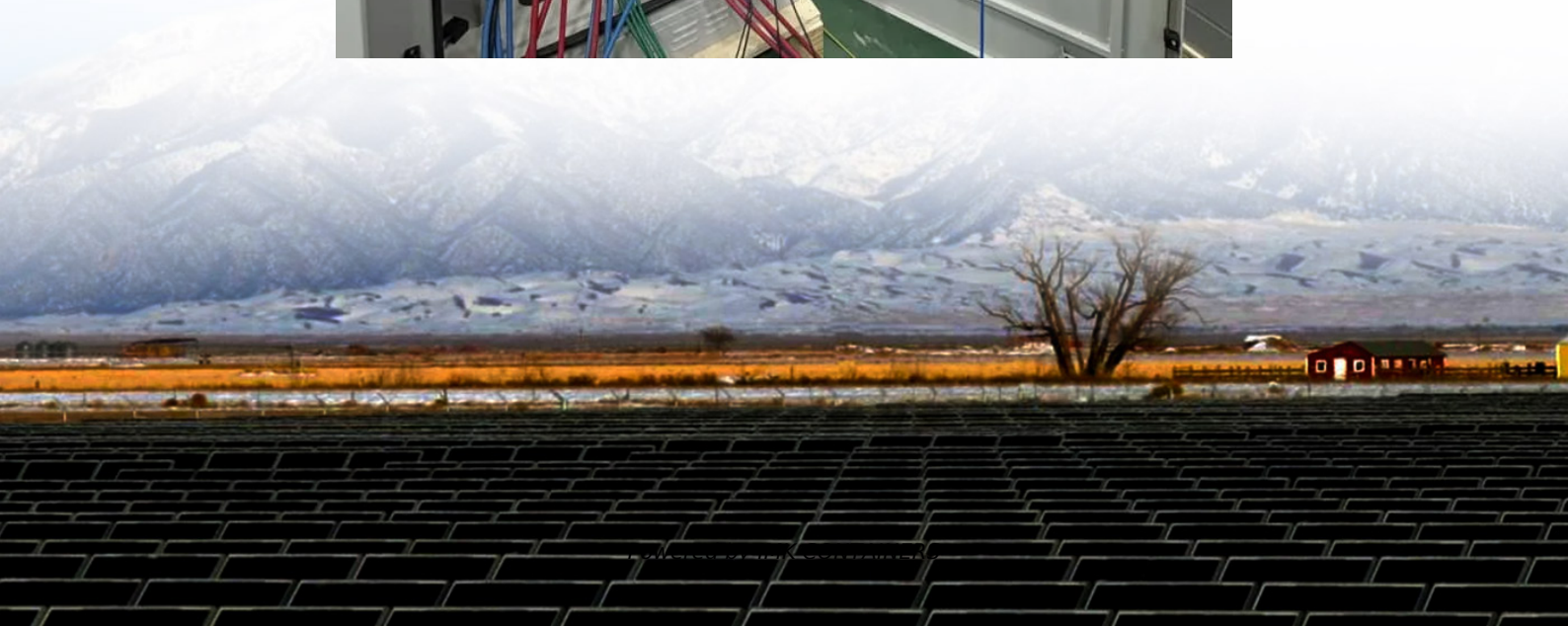


Does the base station design require a power supply change





Overview

How does a base station work?

Depending on the size of base station and its traffic, the base station may also have another sources of power such as a diesel generator, wind turbine or biofuels. The base station is a transceiver and acts as an interface between a mobile station and network using microwave radio communication.

What is a base station & a PV powering Unit?

The base station uses radio signals to connect devices to network as a part of traditional cellular telephone network and solar powering unit is used to power it. The PV powering unit uses solar panels to generate electricity for base stations in areas with no access to grid or areas connected to unreliable grids.

How much power does a base station have?

Maximum base station power is limited to 38 dBm output power for Medium-Range base stations, 24 dBm output power for Local Area base stations, and to 20 dBm for Home base stations. This power is defined per antenna and carrier, except for home base stations, where the power over all antennas (up to four) is counted.

What is base station Power?

Base station power refers to the output power level of base stations, which is defined by specific maximum limits (24 dBm for Local Area base stations and 20 dBm for Home base stations) and includes tolerances for deviation from declared power levels, as well as specifications for total power control dynamic range. How useful is this definition?



Does the base station design require a power supply change



[The power supply design considerations for ...](#)

For 5G, infrastructure OEMs are considering combining the radio, power amplifier and associated signal processing circuits with the passive antenna array in active antenna units (AAU). While AAUs ...

[Learn More](#)

[Building better power supplies for 5G base stations](#)

Building better power supplies for 5G base stations Authored by: Alessandro Pevere, and Francesco Di Domenico, both at Infineon Technologies

[Learn More](#)



Power Base Station

The transmitter characteristics define RF requirements for the wanted signal transmitted from the UE and base station, but also for the unavoidable unwanted emissions outside the transmitted ...

[Learn More](#)



[A Green Base Station Dual Power Supply Strategy](#)

To address the issue of how to maximize renewable power utilization, a dual power supply strategy for green base station is proposed in this article. The strategy consists of Grid ...

[Learn More](#)



[Power Supply for Base Station Market](#)

How do regional variations in 5G deployment strategies impact the power supply requirements for base stations? Regional differences in 5G rollout approaches directly influence power supply ...

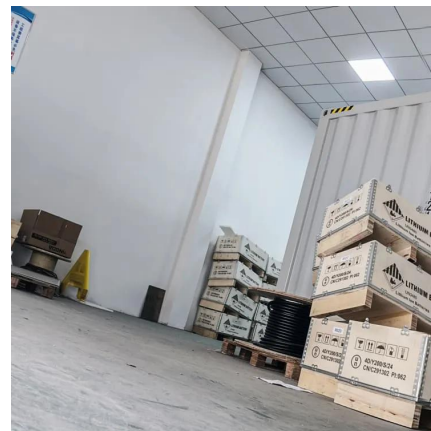
[Learn More](#)



DC20161020.doc

Mobile base station number, unattended, therefore require communication power supply easy maintenance, simple operation, with remote monitoring and strong fault diagnosis ...

[Learn More](#)



The Future of Base Station Design: Trends and Innovations ...

As technology evolves, so does the way base stations are designed, built, and deployed. From new materials and architectures to AI-driven control systems and sustainable ...

[Learn More](#)

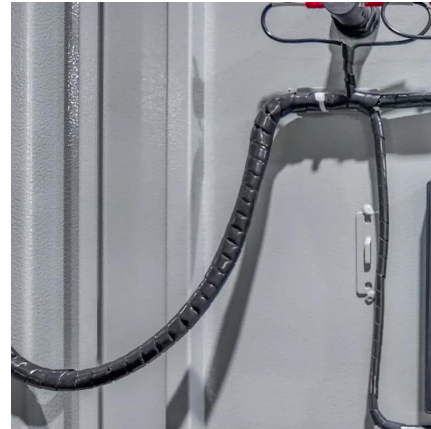


[The power supply design considerations for 5G base stations](#)



For 5G, infrastructure OEMs are considering combining the radio, power amplifier and associated signal processing circuits with the passive antenna array in active antenna ...

[Learn More](#)



The Road to Robust 5G: A Deep Dive into Base Station Power Supply

Facing the Future: The base station power supply is no longer a simple energy conversion unit; it is critical infrastructure that ensures the availability and reliability of the entire mobile network.

[Learn More](#)



Selecting the Right Supplies for Powering 5G Base Stations

It includes everything needed to power 5G base station components, including software design and simulation tools like LTpowerCAD and LTspice. These tools simplify the task of selecting ...

[Learn More](#)



5G macro base station power supply design strategy and ...

For macro base stations, Cheng Wentao of Infineon gave some suggestions on the optimization of primary and secondary power supplies. "In terms of primary power supply, we ...

[Learn More](#)





Contact Us

For catalog requests, pricing, or partnerships, please visit:
<https://www.fundacjawandea-imk.pl>

Scan QR Code for More Information



<https://www.fundacjawandea-imk.pl>