

Emergency communication 4G private network base station





Emergency communication 4G private network base station



[Application of 4G \(LTE\) Private Network Technology in ...](#)

The 4G private network base station is defined in the plan, which is used to realize the coverage of the 4G private network signals of front headquarters and accident sites.

[Learn More](#)

[Emergency Communication Private Network Solution Based](#)

Abstract: This paper proposes a solution of emergency communication private network based on large area network, which aims to provide efficient and reliable ...

[Learn More](#)



Movable Base Stations in Mobile Networks for Emergency Communications

An emergency communication system is necessary for first responders, who need to enter areas with no network coverage or damaged network infrastructure due to natural or ...

[Learn More](#)

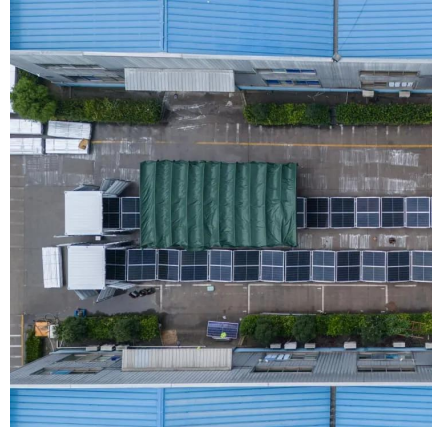


[Airborne Base Stations Bring Back Connectivity](#)

ZTE has developed airborne base stations mounted on uncrewed aerial vehicles to rapidly restore connectivity during natural disasters. These stations can support both private emergency ...



[Learn More](#)



[Military Communication](#)

The standalone 4G LTE Manpack Base Station provides a quick and smart network for voice, data, video, and Position Location for Information Services (PLI) for mounted ...

[Learn More](#)



[Military Communication](#)

The standalone 4G LTE Manpack Base Station provides a quick and smart network for voice, data, video, and Position Location for Information Services (PLI) for mounted and ...

[Learn More](#)



[Airborne LTE 4G Base Station For Emergency ...](#)

Airborne 4G LTE Base Station for Emergency Recsue and Disaster Response Comms Description Patron-X10 from IWAVE is an advanced airborne LTE compact eNodeB products with special design light weight ...

[Learn More](#)





A Emergency Communication System Built By Drone Onboard 4G LTE Private

This test verified the working performance of the airborne integrated base station (BBU+RRU+dispatching station+core network) on the tethered drone. The whole system need ...

[Learn More](#)



JPE LTE base station

The Base Station is compatible with a variety of cellular network bands, including non-standard 3GPP frequencies for private LTE Networks, as well as license-free ISP bands. In addition to ...

[Learn More](#)



[Amarisoft 4G-5G from the lab to the field](#)

They integrate a range of communication technologies--such as 4G, 5G, and non-terrestrial networks--to support secure and continuous information exchange among emergency ...

[Learn More](#)



[An Independent UAV-Based Mobile Base Station](#)

In disaster scenarios, e.g., earthquakes, tsunamis, and wildfires, communication infrastructure often becomes severely damaged. To rapidly restore damaged communication ...

[Learn More](#)





JPE LTE base station

The Base Station is compatible with a variety of cellular network bands, including non-standard 3GPP frequencies for private LTE Networks, as well as license-free ISP bands. In addition to usability as a stationary LTE ...

[Learn More](#)



[An Independent UAV-Based Mobile Base ...](#)

In disaster scenarios, e.g., earthquakes, tsunamis, and wildfires, communication infrastructure often becomes severely damaged. To rapidly restore damaged communication systems, we propose a UAV ...

[Learn More](#)



[Airborne LTE 4G Base Station For Emergency Rescue And ...](#)

Airborne 4G LTE Base Station for Emergency Recsue and Disaster Response Comms Description Patron-X10 from IWAVE is an advanced airborne LTE compact eNodeB products ...

[Learn More](#)



Contact Us

For catalog requests, pricing, or partnerships, please visit:
<https://www.fundacjawandea-imk.pl>



Scan QR Code for More Information



<https://www.fundacjawandea-imk.pl>