

Energy storage 1c and 2c batteries





Overview

What does a 1C battery charge rate mean?

It tells us the speed at which energy moves in or out of the battery. When a battery operates at 1C, it means the battery will be fully charged or discharged in one hour. A 0.5C rate means it takes two hours to complete a full charge or discharge, while a 2C rate means the process happens twice as fast — in just half an hour.

What is the difference between 1C rate and 10AH battery?

For a battery with a capacity of 45Ah, a 1C rate equates to a discharge current of 45A; for a 10Ah battery, discharging at 1C rate means a discharge current of 10A. In both cases, the discharge time are the same, one hour. 1. Battery Capacity: The C-rate is closely related to battery capacity.

What are the parameters of energy storage batteries?

This article will introduce several important parameters of energy storage batteries. 01 Battery capacity Battery capacity is one of the important performance indicators for measuring battery performance. The capacity of a battery is divided into rated capacity and actual capacity.

What does 1c & 2c mean?

A charging and discharging rate of 1C means that the energy storage battery can discharge all its electricity within one hour; 2C means that the energy storage battery can discharge all its electricity within 0.5 hours. 2. How Is "C" Calculated or Derived?



Energy storage 1c and 2c batteries



[Energy Storage Batteries: Why Is It Always 0.5C?](#)

The most typical characteristic of an energy storage system is that it contains an electricity storage medium - batteries. An important performance indicator of batteries is the charging ...

[Learn More](#)

[What Is C-Rate? The Key to Battery Speed and Performance](#)

The C-rate represents how fast a battery can be charged or discharged relative to its rated capacity. It tells us the speed at which energy moves in or out of the battery. When a ...

[Learn More](#)



[Understanding C-Rate in Batteries and Its ...](#)

C Mean in Batteries refers to the C-rate, which measures the rate at which a battery charges or discharges relative to its capacity. For instance, a 100 Ah battery charged at 1C takes one hour to fully charge, ...

[Learn More](#)



[The difference between 1c and 2c energy storage power ...](#)

6 FAQs about [The difference between 1c and 2c energy storage power station capacity] What is the difference between C-rate and 1C? So the definition of the c-rate is: A C-rate is a measure

...



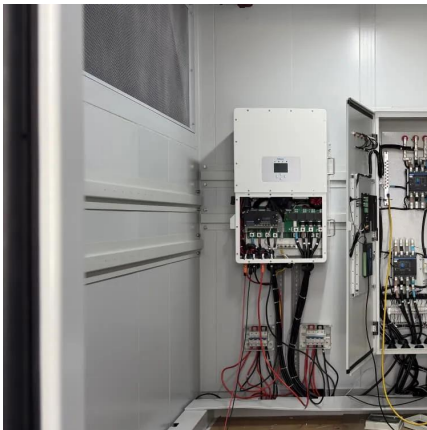
[Learn More](#)



[Energy storage systems.Storage battery](#)

Energy storage systems are typically characterized by their energy storage medium--batteries. An important performance indicator of batteries is their charging and ...

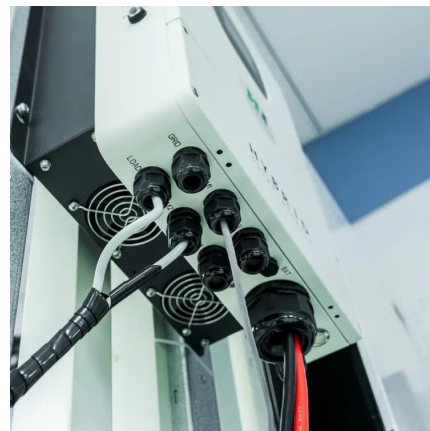
[Learn More](#)



[What is a Battery C Rating?](#)

A 1C battery fully discharges in one hour, while a 2C battery discharges in 30 minutes. Higher C ratings allow for faster energy output, making them essential for high ...

[Learn More](#)



[What's the Difference Between a Battery and ...](#)

What Does 1C Mean in Real Life? What is 1C? Great question! It simply means the battery's full capacity can be discharged in 1 hour. A 100Ah battery discharging at 1C = 100A output A 1C battery is the ...

[Learn More](#)





[Understanding Battery C-Rate: How It ...](#)

Discover the importance of C-rate in batteries, its impact on charging speed, battery lifespan, and performance for devices like smartphones, EVs, drones, and home energy storage systems.

[Learn More](#)



[Energy Storage Battery Parameters , EB BLOG](#)

Explore key parameters like battery capacity, C-rate, SOC, DOD, and SOH crucial for optimizing performance and sustainability in energy storage solutions worldwide.

[Learn More](#)

[Understanding Battery C-Rate: How It Impacts Battery ...](#)

Discover the importance of C-rate in batteries, its impact on charging speed, battery lifespan, and performance for devices like smartphones, EVs, drones, and home ...

[Learn More](#)



[Understanding C-Rate in Batteries and Its Importance](#)

C Mean in Batteries refers to the C-rate, which measures the rate at which a battery charges or discharges relative to its capacity. For instance, a 100 Ah battery charged ...

[Learn More](#)



[SOC, DOD, SOH, discharge C rate Detailed ...](#)

Batteries are one of the most important parts of electrochemical energy storage systems. With the reduction of battery costs and the improvement of battery energy density, safety and life, energy storage ...

[Learn More](#)



SOC, DOD, SOH, discharge C rate Detailed explanation of energy

Batteries are one of the most important parts of electrochemical energy storage systems. With the reduction of battery costs and the improvement of battery energy density, ...

[Learn More](#)

What's the Difference Between a Battery and an Energy Storage ...

What Does 1C Mean in Real Life? What is 1C? Great question! It simply means the battery's full capacity can be discharged in 1 hour. A 100Ah battery discharging at 1C = 100A ...

[Learn More](#)



Contact Us

For catalog requests, pricing, or partnerships, please visit:
<https://www.fundacjawandea-imk.pl>



Scan QR Code for More Information



<https://www.fundacjawandea-imk.pl>