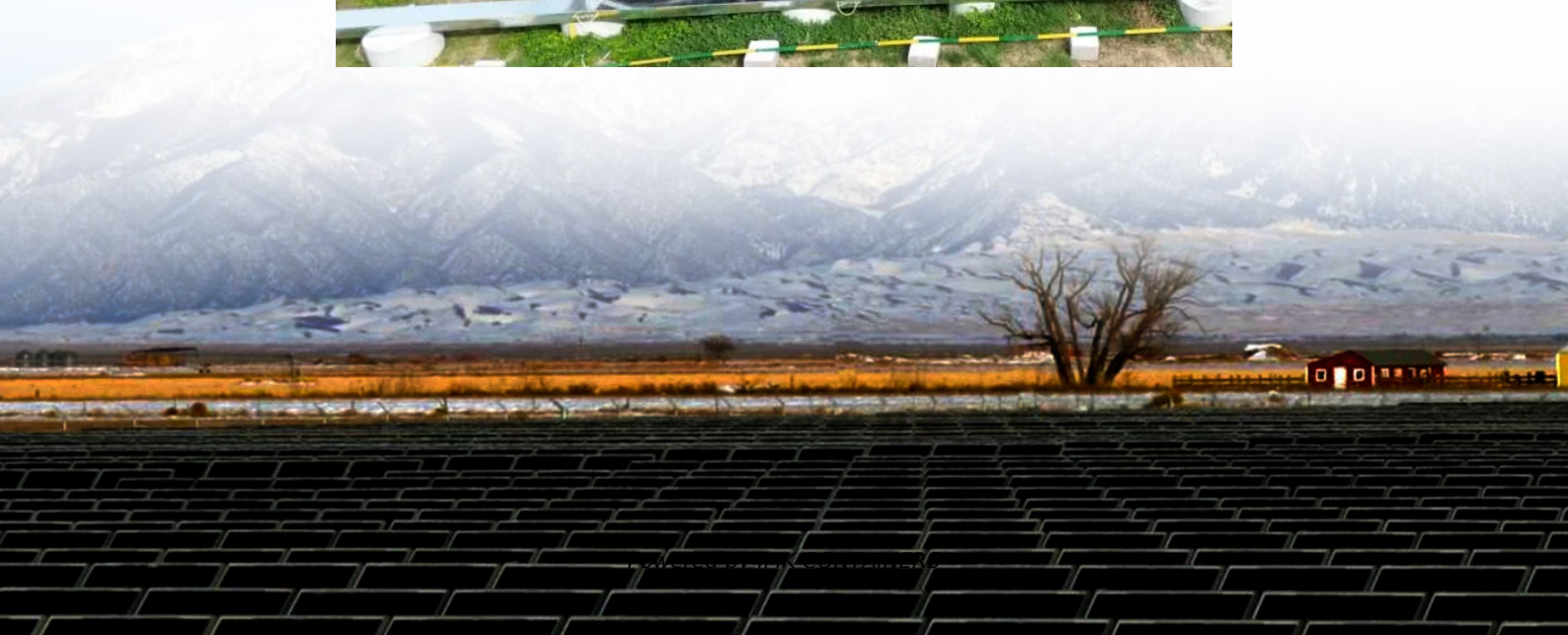


How big an inverter is suitable for 12 volts





Overview

What is a 12 volt inverter?

An inverter is a device that turns the power from a 12 volt DC battery, like the one in your car or truck, into the 120 volt AC power that runs all of the electronics in your house. You can use one of these devices to power all sorts of devices in your car, but it's important to figure out how big of an inverter you need first.

What size inverter do I Need?

For example, if your total load is 1200 watts, then you should consider an inverter size of 2400 watts. Let's consider an example to illustrate the process of finding the right inverter size needed to run a house. Suppose you have the following appliances with indicated power, Note: You can find this information on the label of the appliance.

What are the different solar inverter sizes?

Solar generators range in size from small generators for short camping trips to large off-grid power systems for a boat or house. Consequently, inverter sizes vary greatly. During our research, we discovered that most inverters range in size from 300 watts up to over 3000 watts. In this article, we guide you through the different inverter sizes.

What size inverter for a 12V 200Ah battery?

For a 12V 200Ah battery (2.4kWh), a 2000W inverter is ideal. Formula: Inverter Wattage \leq (Battery Voltage \times Ah Rating \times 0.8). Factor in surge power needs but prioritize sustained loads. Always check the battery's max discharge rate (C-rate) to avoid exceeding safe limits. When sizing for 24V or 48V systems, recalculate using the higher voltage.



How big an inverter is suitable for 12 volts



[Can an Inverter Be Too Big for Your Battery System?](#)

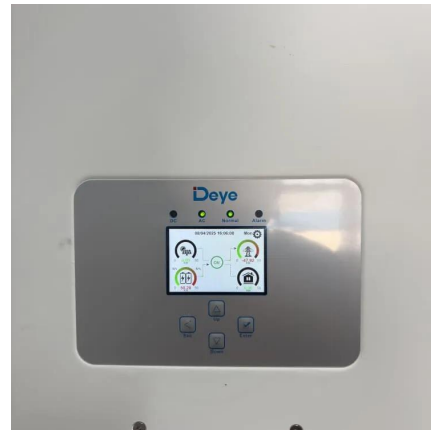
How to Calculate the Right Inverter Size for Your Battery Match the inverter's continuous wattage rating to the battery's discharge capacity. For a 12V 200Ah battery (2.4kWh), a 2000W inverter ...

[Learn More](#)

[How to Size an Inverter and UPS for Home Appliances?](#)

To do this, we need to find the suitable size of inverter and batteries based on the required load in watts. A power inverter is always rated in VA (Volt-Amps), but we assume its ...

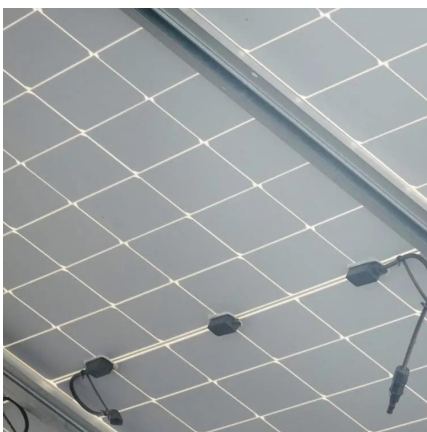
[Learn More](#)



[How to Choose the Right Size Solar Inverter: ...](#)

Wondering what size solar inverter do I need for your solar system? This guide walks you through calculating inverter size based on panel capacity, power usage, and safety margins. We use real examples ...

[Learn More](#)



[Inverter Size Calculator](#)

The Inverter Size Calculator is a digital tool that allows you to determine the correct inverter size needed for a specific total wattage load, considering factors like safety margins and inverter ...



[Learn More](#)



[Find the Right Inverter Size: How Big An ...](#)

An inverter is a device that turns the power from a 12 volt DC battery, like the one in your car or truck, into the 120 volt AC power that ...

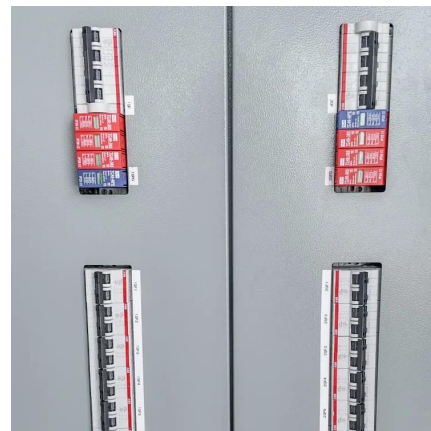
[Learn More](#)



[How To Size An Inverter for Solar and Off ...](#)

Inverters come in 3 different voltages: 12 volts, 24, volts, and 48-volt equipment. The amount of power running through a cable is a product of the voltage and the current.

[Learn More](#)



[What Size Inverter Will Run a Home?](#)

Now, here is how you calculate the inverter battery capacity, = (585 watts x 2 backup hours) / (12 volts) = 97.5 Ah This is the ideal inverter battery capacity for your home. ...

[Learn More](#)





How to Choose the Right Size Solar Inverter: Step-by-Step ...

Wondering what size solar inverter do I need for your solar system? This guide walks you through calculating inverter size based on panel capacity, power usage, and safety ...

[Learn More](#)



[How to Size an Inverter and UPS for Home ...](#)

To do this, we need to find the suitable size of inverter and batteries based on the required load in watts. A power inverter is always rated in VA (Volt-Amps), but we assume its rating in watts based on the ...

[Learn More](#)

[What Size Inverter Will Run a Home?](#)

Now, here is how you calculate the inverter battery capacity, = (585 watts x 2 backup hours) / (12 volts) = 97.5 Ah This is the ideal inverter battery capacity for your home. This is all you need to find the right ...

[Learn More](#)



Find the Right Inverter Size: How Big An Inverter Do You need?

An inverter is a device that turns the power from a 12 volt DC battery, like the one in your car or truck, into the 120 volt AC power that runs all of the electronics in your house. ...

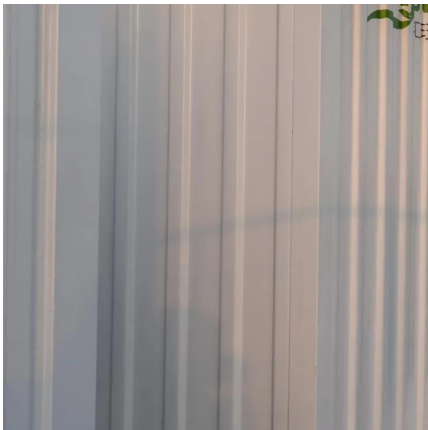
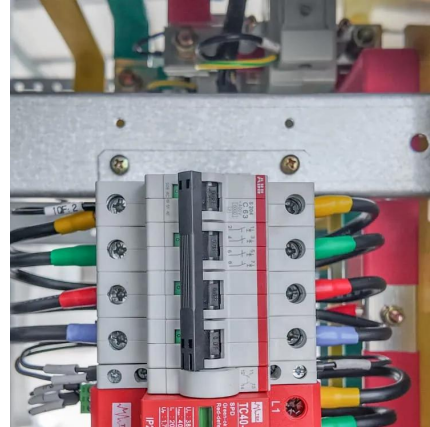
[Learn More](#)



[The Only Inverter Size Chart You'll Ever Need](#)

We created a comprehensive inverter size chart to help you select the correct inverter to power your appliances. The need for an inverter size chart first became apparent ...

[Learn More](#)



[How to Determine the Right Inverter Size For Your ...](#)

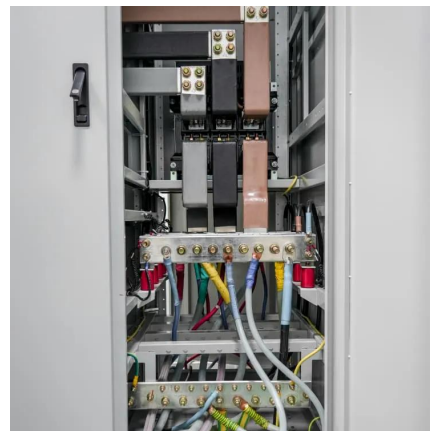
An inverter is a device that turns the power from a 12 volt DC battery, like the one in your car or truck, into the 120 volt AC power that runs all of the electronics in your house. You can use ...

[Learn More](#)

[How To Size An Inverter for Solar and Off Grid](#)

Inverters come in 3 different voltages: 12 volts, 24, volts, and 48-volt equipment. The amount of power running through a cable is a product of the voltage and the current.

[Learn More](#)



Contact Us

For catalog requests, pricing, or partnerships, please visit:
<https://www.fundacjawandea-imk.pl>



Scan QR Code for More Information



<https://www.fundacjawandea-imk.pl>