

# How big should the power station energy storage area be





## Overview

---

What are battery storage power stations?

Battery storage power stations are usually composed of batteries, power conversion systems (inverters), control systems and monitoring equipment. There are a variety of battery types used, including lithium-ion, lead-acid, flow cell batteries, and others, depending on factors such as energy density, cycle life, and cost.

What are the core functions of energy storage power stations?

In addition to these core functions, functions such as anti-backflow protection, support for parallel/off-grid operation, and islanding protection further enhance the reliability and versatility of energy storage power stations.

What is Ningxia power's energy storage station?

On March 31, the second phase of the 100 MW/200 MWh energy storage station, a supporting project of the Ningxia Power's East Ningxia Composite Photovoltaic Base Project under CHN Energy, was successfully connected to the grid. This marks the completion and operation of the largest grid-forming energy storage station in China.

What is the largest grid-forming energy storage station in China?

This marks the completion and operation of the largest grid-forming energy storage station in China. The photo shows the energy storage station supporting the Ningdong Composite Photovoltaic Base Project. This energy storage station is one of the first batch of projects supporting the 100 GW large-scale wind and photovoltaic bases nationwide.



## How big should the power station energy storage area be

---



### [Energy Storage Power Station Project Land Area: What You ...](#)

The Great Land Swap Opportunity Forward-thinking cities are trading parking lots for power banks. San Diego's "Park & Power" initiative converts underused parking structures ...

[Learn More](#)

### [Energy Storage Power Stations: Breaking Down Investment ...](#)

AFRI SOLAR - Summary: This article explores key factors influencing energy storage power station costs, analyzes industry trends, and provides actionable insights for investors. Discover ...

[Learn More](#)



### **What are the specifications of energy storage power stations?**

1. Energy storage power stations serve a crucial role in modern electricity grids, characterized by several key specifications that enhance their functionality, including: 1) ...

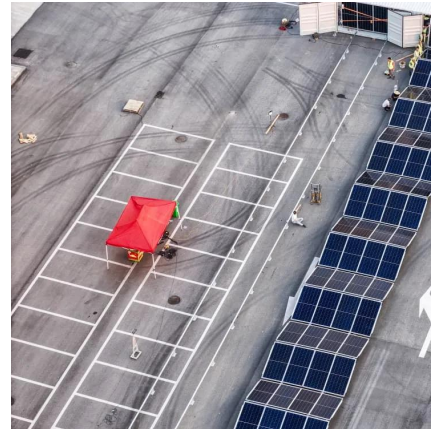
[Learn More](#)

### **A planning scheme for energy storage power station based ...**

To reduce the waste of renewable energy and increase the use of renewable energy, this paper proposes a provincial-city-county spatial scale energy storage configuration ...



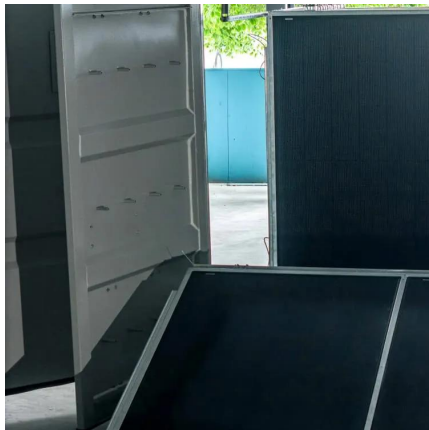
[Learn More](#)



### [How Much Land Do Energy Storage Power Stations Really ...](#)

As renewable energy capacity surges globally - solar and wind installations grew 18% year-over-year in Q1 2025 - the need for utility-scale energy storage has never been greater. But here's ...

[Learn More](#)



### [Typical design of energy storage power station](#)

The station was built in two phases; the first phase, a 100 MW/200 MWh energy storage station, was constructed with a grid-following design and was fully operational in June 2023, with an ...

[Learn More](#)



### [Tesla battery Megafactory in Shanghai launches production](#)

Tesla's energy storage plant in Shanghai's Lingang Special Area commenced operation on Feb 11, as the assembly line started the production of the first Megapack unit. ...

[Learn More](#)





## [Tesla battery Megafactory in Shanghai ...](#)

Tesla's energy storage plant in Shanghai's Ling-gang Special Area commenced operation on Feb 11, as the assembly line started the production of the first Megapack unit. The Megapack, which is an ...

[Learn More](#)



## [Battery storage power station - a comprehensive guide](#)

This article provides a comprehensive guide on battery storage power station (also known as energy storage power stations). These facilities play a crucial role in modern power ...

[Learn More](#)



## [China's Largest Grid-Forming Energy Storage Station ...](#)

On March 31, the second phase of the 100 MW/200 MWh energy storage station, a supporting project of the Ningxia Power's East Ningxia Composite Photovoltaic Base Project ...

[Learn More](#)



## [Energy Storage Support Structure Guide: BESS Frames, ...](#)

Energy Storage Support Structure: The Complete Guide to BESS Frameworks In the rapidly evolving battery energy storage system (BESS) landscape, the term "support structure" is ...

[Learn More](#)





## Contact Us

---

For catalog requests, pricing, or partnerships, please visit:  
<https://www.fundacjawandea-imk.pl>

### Scan QR Code for More Information



<https://www.fundacjawandea-imk.pl>