

# How communication tower base stations work





## Overview

---

How do base stations work?

Base stations use antennas mounted on cell towers to send and receive radio signals to and from mobile devices within their coverage area. This communication enables users to make voice calls, send texts, and access data services, connecting them to the wider world. Network Management and Optimization.

What are base stations & cell towers?

These structures facilitate the transmission and reception of signals between mobile devices and the wider network, enabling voice calls, text messages, and data services. Understanding the role and technology behind base stations and cell towers is key to appreciating how mobile networks operate and evolve to meet growing demands. Base Stations.

What is the difference between a base station and a tower?

In summary, the base station is the active component responsible for network communication, while the tower is the physical structure that supports the base station. In summary, base stations are critical for modern telecommunications as they serve as the link between mobile devices and the extensive network infrastructure that spans the globe.

How do cell towers make wireless communication networks possible?

Cell towers make wireless communication networks possible. Here's the technology & engineering that underpins so much of our world today. Cell towers consist of various components such as antennas, base transceiver stations, masts, and ground-based equipment, enabling efficient cellular communication by managing signals from mobile devices.



## How communication tower base stations work

---



### [What Is a Telecom Base Station and How Does It Work?](#)

In today's connected world, telecom base stations form the invisible foundation that enables mobile communication anytime, anywhere. Whether making a phone call, watching a video, or ...

### [Learn More](#)

### [How do communication base stations work](#)

Communication base stations, or cell towers, are vital for wireless networks. They consist of antennas, transceivers, controllers, and power supplies to transmit and receive signals.

### [Learn More](#)



### [How Cell Towers Work to Keep Your Networks Connected - NI](#)

Cell towers consist of various components such as antennas, base transceiver stations, masts, and ground-based equipment, enabling efficient cellular communication by ...

### [Learn More](#)



### [Exploring communication base stations](#)

The specific working principles of different types of base stations, such as 2G, 3G, 4G, and 5G base stations, may vary depending on the communication technology standards used, but overall they all ...



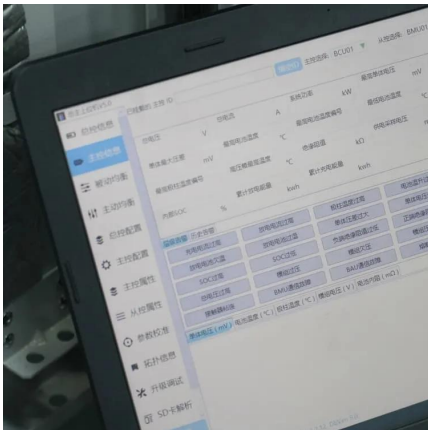
[Learn More](#)



### Base Stations

The present-day tele-space is incomplete without the base stations as these constitute an important part of the modern-day scheme of wireless communications. They are ...

[Learn More](#)



[Exploring communication base stations.](#)

The specific working principles of different types of base stations, such as 2G, 3G, 4G, and 5G base stations, may vary depending on the communication technology standards ...

[Learn More](#)



[Base Stations and Cell Towers: The Pillars of Mobile ...](#)

Base stations and cell towers are critical components of cellular communication systems, serving as the infrastructure that supports seamless mobile connectivity. These ...

[Learn More](#)

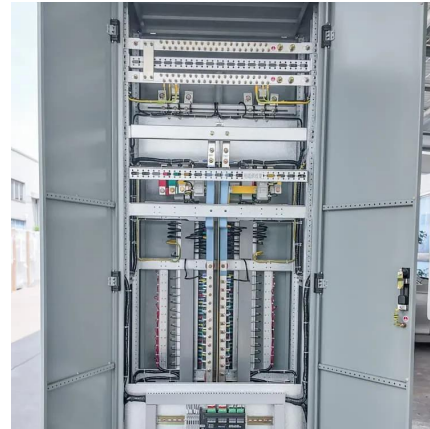


[How do communication base stations work](#)



Communication base stations, or cell towers, are vital for wireless networks. They consist of antennas, transceivers, controllers, and power supplies to transmit and receive signals.

[Learn More](#)



[What Is A Base Station?](#)

A base station is an integral component of wireless communication networks, serving as a central point that manages the transmission and reception of signals between ...

[Learn More](#)



[What Is a Base Station? Definition and How It Works](#)

Define the central communication hubs of modern wireless technology. Learn how base stations manage capacity and ensure reliable connections.

[Learn More](#)



[What is a Base Station? -- From Communication Core to ...](#)

Base stations are the core of mobile communication, and with the rise of 5G, thermal and energy challenges are increasing. This article explains the definition, structure, ...

[Learn More](#)



[How Cell Towers Work to Keep Your...](#)



Cell towers consist of various components such as antennas, base transceiver stations, masts, and ground-based equipment, enabling efficient cellular communication by managing signals from mobile devices. ...

[Learn More](#)



[How Do Telecommunication Towers Work? A...](#)

Introduction In 2025, telecommunication towers stand as engineering marvels, driving global connectivity by powering 5G networks for smart cities, autonomous vehicles, ...

[Learn More](#)

## Contact Us

---

For catalog requests, pricing, or partnerships, please visit:  
<https://www.fundacjawandea-imk.pl>

**Scan QR Code for More Information**



<https://www.fundacjawandea-imk.pl>