

How many factories are there in Columbia Power Base Station





Overview

Does the Columbia Generating Station promote nuclear energy?

The Columbia Generating Station has made an enormous contribution to energy production in the Pacific Northwest. New studies indicate that favorability of nuclear energy has increased by 15% since the construction of this facility.

How much electricity does the Columbia Generating Station produce?

The Columbia Generating Station produces 1,190 gross megawatts of electricity. This accounts for 10% of all energy demands in Washington and is enough to power the entire city of Seattle.

When was the Columbia Generating Station built?

The Columbia Generating Station was first proposed in 1973 and was not constructed and operational until late 1985 to address the growing population size and energy demand in Washington. However, the construction was delayed due to costs.

Is Columbia a nuclear power plant?

Columbia Generating Station is the northwest's only commercial nuclear energy facility and is the third largest electricity generator in Washington state, behind Grand Coulee and Chief Joseph dams. Carbon-free Columbia produces millions of megawatts of carbon-free electricity each year.



How many factories are there in Columbia Power Base Station



Columbia Nuclear Generating Station , The Center for Land ...

The sole survivor of the Washington Public Power Supply System (WPPSS) program's ambitious construction plan of the 1970's, to build five nuclear units at two locations, ...

[Learn More](#)

[Columbia Generating Station](#)

The Columbia Generating Station has made an enormous contribution to energy production in the Pacific Northwest. While there has been much controversy about nuclear energy, new studies identify that ...

[Learn More](#)



[Columbia Generating Station](#)

The Columbia Generating Station, is a nuclear power station located on the United States Department of Energy Hanford Site, 12 miles (20 km) NW of Richland, Washington. Its ...

[Learn More](#)



[Columbia Generating Station](#)

The Columbia Generating Station has made an enormous contribution to energy production in the Pacific Northwest. While there has been much controversy about nuclear ...

[Learn More](#)



[WNP-2 Nuclear Power Plant](#)

Columbia Generating Plant, formerly WNP-2, is the sole survivor of a group of 5 nuclear plants originally planned for operation in the state of Washington. Energy Northwest, a ...

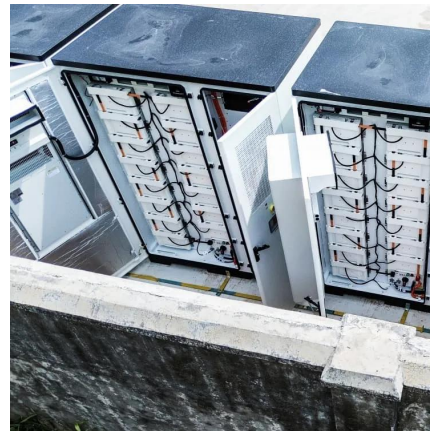
[Learn More](#)



[WNP-2 Nuclear Power Plant](#)

Columbia Generating Plant, formerly WNP-2, is the sole survivor of a group of 5 nuclear plants originally planned for operation in the state of Washington. Energy Northwest, a Washington state agency, is ...

[Learn More](#)



[NW's only nuclear power plant to undergo \\$700M upgrade](#)

Columbia Generating Station will boost output by 186 MW through \$700M upgrade. Three-phase project starts 2027, adds power for 125,000 more Northwest homes.

[Learn More](#)



[Columbia Energy Center](#)



Proposed Retirement Emissions Data Permit Issues and Sierra Club Lawsuit Coal Ash Waste and Water Contamination Articles and Resources In July 2020, Wisconsin Power & Light Company parent company Alliant Energy set an "aspiration" to reach net-zero carbon by 2050 and eliminate all coal power plants from its fleet by 2040. In February 2021, Unit 1 was scheduled for retirement in 2023 and unit 2 was scheduled for retirement by the end of 2024. Both retirements were subject to additional See more on gem.wiki Wikiwand



Columbia Generating Station - Wikiwand

Columbia Generating Station is a nuclear commercial energy facility located on the Hanford Site, 10 miles (16 km) north of Richland, Washington. It is owned and operated by Energy ...

[Learn More](#)



[Nuclear Energy: Columbia Generating Station](#)

Columbia Generating Station is the northwest's only commercial nuclear energy facility and is the third largest electricity generator in Washington state, behind Grand Coulee ...

[Learn More](#)

[Columbia Generating Station](#)

Columbia Generating Station is a nuclear commercial energy facility located on the Hanford Site, 10 miles (16 km) north of Richland, Washington. It is owned and operated by Energy ...

[Learn More](#)



[NW's only nuclear power plant to undergo ...](#)



Columbia Generating Station will boost output by 186 MW through \$700M upgrade. Three-phase project starts 2027, adds power for 125,000 more Northwest homes.

[Learn More](#)

[Columbia Nuclear Generating Station , The ...](#)

The sole survivor of the Washington Public Power Supply System (WPPSS) program's ambitious construction plan of the 1970's, to build five nuclear units at two locations, the Columbia Generating Station ...

[Learn More](#)



[Columbia Energy Center](#)

Columbia Energy Center is an operating power station of at least 1112-megawatts (MW) in Portage, Columbia, Wisconsin, United States.

[Learn More](#)



[Columbia Power - Posi+ive Energy](#)

The Arrow Lakes Generating Station Project saw the addition of a powerhouse located immediately downstream of BC Hydro's water storage Hugh Keenleyside Dam on the ...

[Learn More](#)





Contact Us

For catalog requests, pricing, or partnerships, please visit:
<https://www.fundacjawandea-imk.pl>

Scan QR Code for More Information



<https://www.fundacjawandea-imk.pl>