

How many watts does a 220v inverter use





Overview

How much power does an inverter use?

An inverter draws power from a battery depending on its efficiency, typically over 92%. For a connected load of 250 watts, the inverter uses less than 270 watts from the battery. This value includes energy conversion losses. Understanding inverter specifications helps optimize power consumption and battery voltage for better performance.

How much power does a 1500 watt inverter draw?

A 1500 watt inverter with a 500 watt load would be 50 (25) Amps, not 150 (75) Amps. The same inverter with a 1200 watt load would draw 120 (60) Amps, which would be the same amount as a 1200 watt inverter at load capacity. A 2000w 12v pure sine wave inverter draws power based only on its load.

How much power does a 12V inverter draw?

A 2000w 12v pure sine wave inverter draws power based only on its load. Current (Amps) = Load Watts ÷ (Battery Voltage x Inverter Efficiency) Inverter efficiency is typically 85% (0.85). Example (12V system):.

How much power does a 1000 watt inverter use?

The efficiency of an inverter can commonly range from 80% to 95%. Higher efficiency means less power drawn from the battery. Therefore, a 1000-watt inverter with 90% efficiency would draw around 1111 watts from the battery under full load. The load connected to the inverter also plays a significant role.



How many watts does a 220v inverter use



[The Only Inverter Size Chart You'll Ever Need](#)

Inverters are essential components of many power backup systems, helping to convert DC power stored in batteries into AC power for household or commercial use. ...

[Learn More](#)

[The Only Inverter Size Chart You'll Ever Need](#)

Inverter Size Chart We have summarized the appliances that inverters from 300W to 3000W can run depending on their rated maximum power. Note to our readers: Use the ...

[Learn More](#)



[How much power does an inverter draw? - Help Centre](#)

The same inverter with a 1200 watt load would draw 120 (60) Amps, which would be the same amount as a 1200 watt inverter at load capacity. A 2000w 12v pure sine wave inverter draws ...

[Learn More](#)



[Amps to Watts Converter](#)

To convert amps (electrical current) to watts (electrical power) at a fixed voltage, you can use the equation: $watts = amps \times volts$. Simply multiply your amps figure by the voltage.



[Learn More](#)



[How Many Amps Does an Inverter Draw?](#)

Current draw calculations for 300W to 5000W inverters in 12V, 24V and 48V systems, and common myths and questions about inverter current draw.

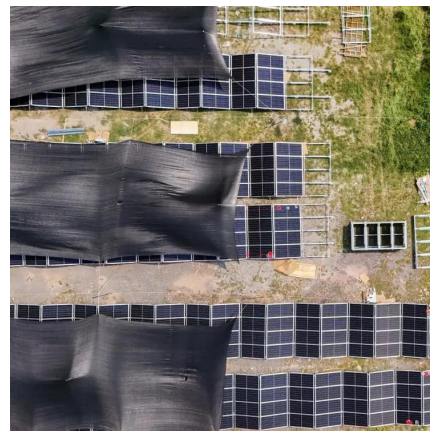
[Learn More](#)



[Inverter Current Calculator](#)

How to Use the Inverter Current Calculator To use the inverter current calculator, follow these steps: Input the power rating (in watts or kilowatts) of your inverter.

[Learn More](#)



[How Many Amps Does an Inverter Draw?](#)

Current draw calculations for 300W to 5000W inverters in 12V, 24V and 48V systems, and common myths and questions about inverter current draw.

[Learn More](#)





[Inverter Usage Calculator & Formula Online Calculator Ultra](#)

Inverters are essential components of many power backup systems, helping to convert DC power stored in batteries into AC power for household or commercial use. ...

[Learn More](#)



[Inverter Power Draw: How Much Power Does An Inverter Use ...](#)

An inverter draws power from a battery depending on its efficiency, typically over 92%. For a connected load of 250 watts, the inverter uses less than 270 watts from the ...

[Learn More](#)

[How many watts does a 220v inverter use](#)

What voltage does an inverter use? Most residential and small commercial inverters use one of the following DC Powered by Solar Storage Container Solutions Page 3/7 input ...

[Learn More](#)



Contact Us

For catalog requests, pricing, or partnerships, please visit:
<https://www.fundacjawandea-imk.pl>



Scan QR Code for More Information



<https://www.fundacjawandea-imk.pl>