

How many watts does the original super large inverter have





Overview

Before we go any further, we highly recommend that you choose a pure sine wave inverter. This type of inverter delivers high-quality electricity, similar to your utility company. This way, none of your appliance.

How to size a solar inverter?

The right way to size an inverter is to check the wattage. The inverter wattage must be the same or greater than your solar panel's watts. Here is a chart that shows the watts consumption of various appliances and what inverter size you will need. Note that this guide includes a 20% safety margin for the inverter watts.

Do I need an inverter size chart?

The need for an inverter size chart first became apparent when researching our DIY solar generator build. Solar generators range in size from small generators for short camping trips to large off-grid power systems for a boat or house. Consequently, inverter sizes vary greatly.

What wattage should a solar inverter be?

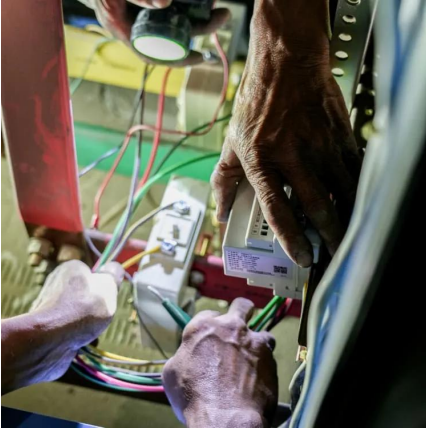
The inverter wattage must be the same or greater than your solar panel's watts. Here is a chart that shows the watts consumption of various appliances and what inverter size you will need. Note that this guide includes a 20% safety margin for the inverter watts. This safety percentage can be adjusted.

Is a 3000 watt inverter enough?

If your devices require 400 watts and you have 300 continuous / 200 surge inverter, it is not enough .A 3000 watt inverter usually has 6000W surge power, or double the running watts. Most of the attention in solar power is focused on solar panels, but do not neglect the inverter.



How many watts does the original super large inverter have



Is your inverter too big? Understanding the downsides of ...

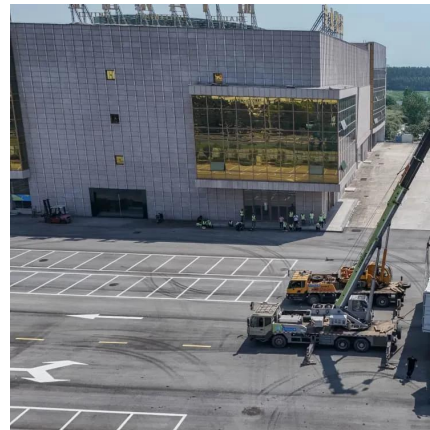
At first glance, a more powerful inverter seems like a good idea: more headroom, better handling of peak loads, and "it's always better to have more." But in practice, a ...

[Learn More](#)

[Solar Inverter Size Chart](#)

If you have a 1000 watt solar array, your inverter must be at least 1200 watts. There must be at least 10% reserve power available, 20% is even better for large off grid solar systems
Inverter Size Chart The right way to ...

[Learn More](#)



How to Choose the Right Size Solar Inverter: Step-by-Step ...

Wondering what size solar inverter do I need for your solar system? This guide walks you through calculating inverter size based on panel capacity, power usage, and safety ...

[Learn More](#)



[The Only Inverter Size Chart You'll Ever Need](#)

We have created a comprehensive inverter size chart to help you select the correct inverter to power your appliances.

[Learn More](#)



[Inverter Size Calculator & Formula Online Calculator Ultra](#)

Inverters have become a crucial part of power systems, especially with the rise of solar energy and off-grid power solutions. An inverter converts direct current (DC) from ...

[Learn More](#)



[How to Choose the Right Size Solar Inverter:...](#)

Wondering what size solar inverter do I need for your solar system? This guide walks you through calculating inverter size based on panel capacity, power usage, and safety margins. We use real examples ...

[Learn More](#)



[What Size Solar Inverter Do I Need? A Quick...](#)

Introduction Choosing the right solar inverter is critical to getting the most out of your photovoltaic (PV) system. Many DIY installers and homeowners ask, " what size solar inverter do I need?" This guide will ...

[Learn More](#)



[Inverter Size Chat: What Size Inverter Do I...](#)



Inverter Size Chart To help you quickly find your inverter size, I have created this easy-to-read inverter size chart. The watt rating of each appliance is a general average for you to compare against inverter sizes.

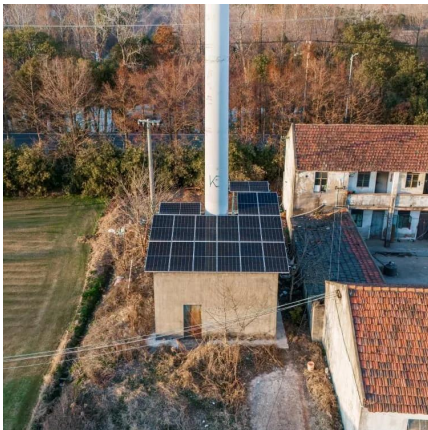
[Learn More](#)



[Choosing the Right Inverter: What Size Inverter Do I Need?](#)

Conclusion Choosing the right inverter size is crucial for maximizing the performance and efficiency of your solar energy system. Sigenergy offers a range of reliable ...

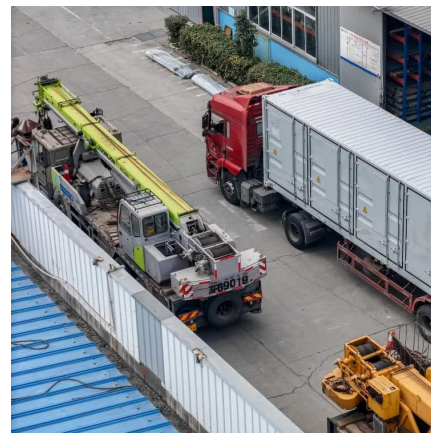
[Learn More](#)



[Largest Solar Inverter Sizes: Boosting Efficiency](#)

Learn how large solar inverters enhance efficiency, cut costs, and support grid stability in renewable energy.

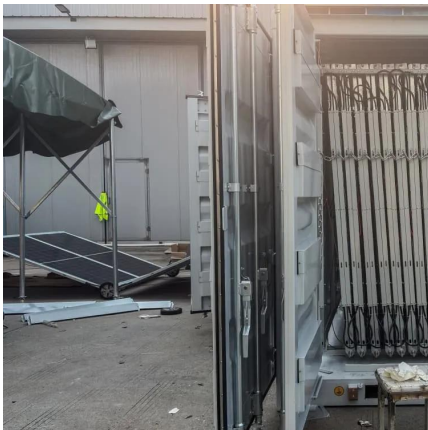
[Learn More](#)



[Solar Inverter Size Chart](#)

If you have a 1000 watt solar array, your inverter must be at least 1200 watts. There must be at least 10% reserve power available, 20% is even better for large off grid solar systems Inverter ...

[Learn More](#)

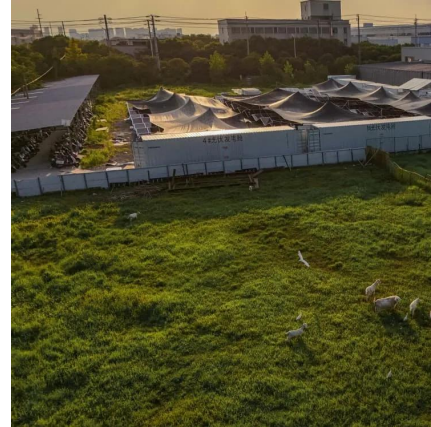


[What Size Inverter Do I Need](#)



What size inverter do you need? This guide covers wattage calculations, surge power, and key factors to help you choose the right inverter size.

[Learn More](#)



[Inverter Size Chat: What Size Inverter Do I Need?](#)

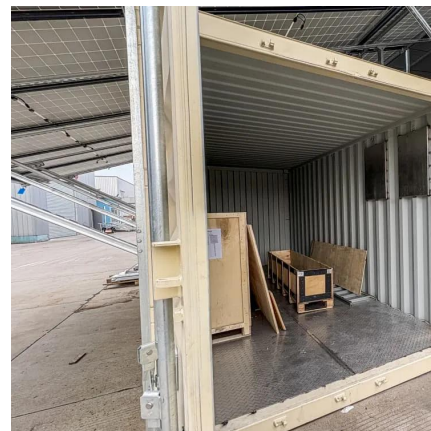
Inverter Size Chart To help you quickly find your inverter size, I have created this easy-to-read inverter size chart. The watt rating of each appliance is a general average for you to compare ...

[Learn More](#)

[What Size Solar Inverter Do I Need? A Quick Sizing Guide](#)

Introduction Choosing the right solar inverter is critical to getting the most out of your photovoltaic (PV) system. Many DIY installers and homeowners ask, " what size solar inverter ...

[Learn More](#)



Contact Us

For catalog requests, pricing, or partnerships, please visit:
<https://www.fundacjawandea-imk.pl>



Scan QR Code for More Information



<https://www.fundacjawandea-imk.pl>