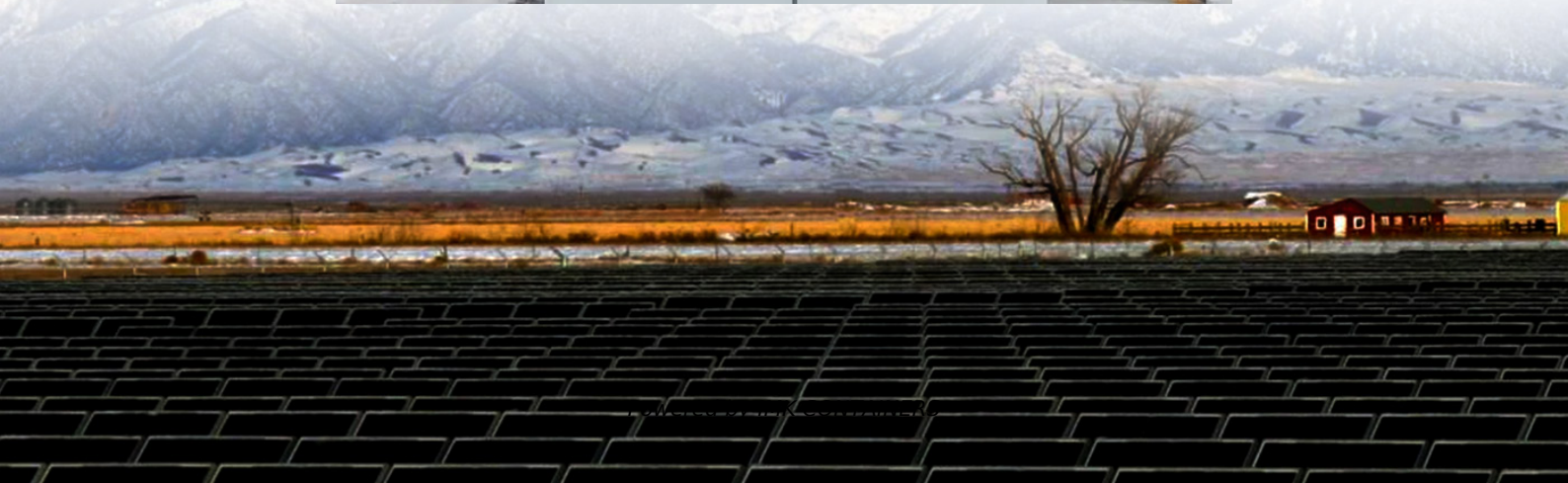


How much is the battery current of the energy storage cabinet





Overview

What is energy storage cabinet?

Energy Storage Cabinet is a vital part of modern energy management system, especially when storing and dispatching energy between renewable energy (such as solar energy and wind energy) and power grid.

What type of batteries are used in energy storage cabinets?

Lithium batteries have become the most commonly used battery type in modern energy storage cabinets due to their high energy density, long life, low self-discharge rate and fast charge and discharge speed.

How much energy can a storage battery store?

A typical storage battery from The Energy Saving Store can store up to 4kWH of energy; enough to power a kettle 37 times. Up to 16kWH of capacity is available, but speak to The Energy Saving Store about your options. Storage batteries qualify for upfront funding from the Energy Saving Trust as an eco-friendly means to power your home.

What are the economics of battery energy storage?

The Economics of Battery Energy Storage, a recent RMI analysis, showed that battery storage systems can provide up to thirteen distinct electricity services to the grid. However, some of these services are hindered by regulatory barriers and cannot compete directly with conventional investments in wires and generators.



How much is the battery current of the energy storage cabinet



[How to design an energy storage cabinet: integration and ...](#)

As the core equipment in the energy storage system, the energy storage cabinet plays a key role in storing, dispatching and releasing electrical energy. How to design an ...

[Learn More](#)

[Energy Storage Battery Cabinet Solutions for Commercial ...](#)

The structural design of commercial and industrial energy storage battery cabinets plays a critical role in ensuring the safety, performance, cost-effectiveness, and adaptability of battery ...

[Learn More](#)



[What are the technical specifications of energy storage ...](#)

Technical specifications of energy storage cabinets include 1. Capacity, measured in kilowatt-hours (kWh), which signifies how much energy can be stored; 2. Voltage rating, ...

[Learn More](#)



[Energy storage grid cabinet function](#)

The rack-type energy storage system supports user-side energy response scheduling and remote duty operation and maintenance, supports parallel/off-grid operation, and can be widely used ...



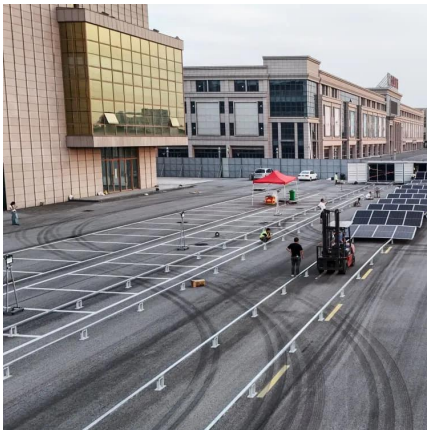
[Learn More](#)



[What are the technical specifications of ...](#)

Technical specifications of energy storage cabinets include 1. Capacity, measured in kilowatt-hours (kWh), which signifies how much energy can be stored; 2. Voltage rating, typically ranging from 12V to ...

[Learn More](#)



[What Is an Energy Cabinet and How Does It Work? , SolarInfo](#)

An energy cabinet is the hub of the modern distributed power systems--a control, storage, and protection nexus for power distribution. Powering a 5G outdoor base station ...

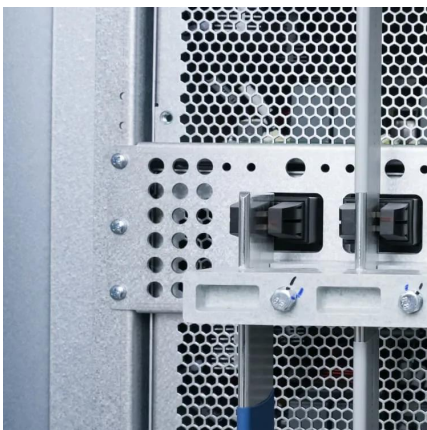
[Learn More](#)



[Lithium battery energy storage cabinet diagram](#)

A battery energy storage system (BESS) is an electrochemical device that charges (or collects energy) from the grid or a power plant and then discharges that energy at a later time to ...

[Learn More](#)





Energy Storage Cabinet Capacity Units: The Ultimate Guide ...

Energy storage cabinet capacity isn't rocket science - it's basically how much juice your battery can hold, measured in those fancy units you see on spec sheets.

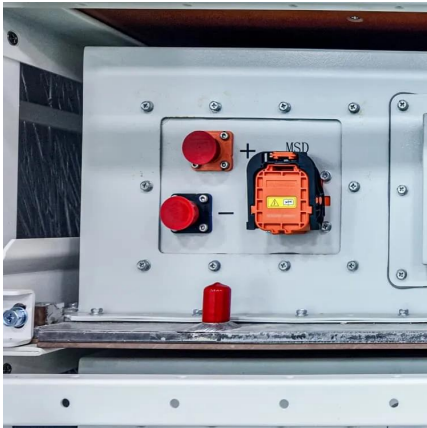
[Learn More](#)



[Energy Storage Cabinet: From Structure to Selection for ...](#)

Rapid deployment of solar and wind is accelerating the need for flexible capacity. An energy storage cabinet pairs batteries, controls, and safety systems into a compact, grid-ready ...

[Learn More](#)



[Energy storage cabinet basic structure](#)

An energy storage cabinet is a device that stores electrical energy and usually consists of a battery pack, a converter PCS, a control chip, and other components.

[Learn More](#)



[Energy storage cabinet charging calculation](#)

100kW, it's a powerhouse in a compact industrial and commercial applications. Highly suitable for all kinds of outdoor applications (PV) energy into the This paper presents a detailed review of ...

[Learn More](#)





Contact Us

For catalog requests, pricing, or partnerships, please visit:
<https://www.fundacjawandea-imk.pl>

Scan QR Code for More Information



<https://www.fundacjawandea-imk.pl>