

How to check the load current of base station power supply





Overview

What is a base load power station?

The total load on a power station consists of two parts viz., base load and peak load. In order to achieve overall economy, the best method to meet load is to interconnect two different power stations. The more efficient plant is used to supply the base load and is known as base load power station.

What is the difference between base load and peak load power station?

The more efficient plant is used to supply the base load and is known as base load power station. The less efficient plant is used to supply the peak loads and is known as peak load power station. There is no hard and fast rule for selection of base load and peak load stations as it would depend upon the particular situation.

How do you measure power supply current?

If your product relies on stable voltage and current delivery, routine power supply current measurement should be part of your process—especially before deployment or shipment. The most common method for measuring current is to place a multimeter in series with the circuit.

How to measure power supply current in a fixed circuit?

For best results, aim for a reading where the digits are active and not all zeros. This gives better accuracy and makes the data more useful in analysis. For repeated testing in a fixed circuit, placing a resistor of known value in series with the load can be a convenient and effective technique for power supply current measurement.



How to check the load current of base station power supply



Power Supply Measurement Tips, Part 7 of 10: Power Supply ...

Explore Part 7 of our Power Supply Measurement Tips series. Learn how to check load regulation, ripple, noise, efficiency, and compliance with precision tools.

[Learn More](#)

[How to Check a Power Supply: PSU Tester, Paperclip, & More](#)

10 Stages of Power Supply Design Power supplies are the workhorses behind all electronics and electrical equipment. They come in numerous varieties to fit the gamut of ...

[Learn More](#)



[POWER SUPPLY MEASUREMENT TIPS](#)

10 Stages of Power Supply Design Power supplies are the workhorses behind all electronics and electrical equipment. They come in numerous varieties to fit the gamut of ...

[Learn More](#)



[Base load and Peak Load on Power Station:](#)

Referring to the load curve of Fig. 3.13, it is clear that there are peak demands of load excluding base load. These peak demands of the station generally form a small part of the total load and may occur throughout the ...



[Learn More](#)



[Power Supply Measurement Tips, Part 7 of 10: ...](#)

Explore Part 7 of our Power Supply Measurement Tips series. Learn how to check load regulation, ripple, noise, efficiency, and compliance with precision tools.

[Learn More](#)



[Power Supply Measurement and Analysis](#)

Introduction A power supply is a component, subsystem, or system that converts electrical power from one form to another; commonly from alternating current (AC) utility power ...

[Learn More](#)



[How to Measure Output Current in a Power Supply . Ideal ...](#)

How to Measure the Output Current of a Power Supply Knowing how to measure output current is essential when designing, testing, or troubleshooting a power supply. Whether you're ...

[Learn More](#)





How to Measure Output Current in a Power Supply , Ideal Power

How to Measure the Output Current of a Power Supply Knowing how to measure output current is essential when designing, testing, or troubleshooting a power supply. Whether you're ...

[Learn More](#)



power supply

I'm using an ADP7118 LDO in a battery-powered design. Load current: 15 mA Ground current (datasheet): ~0.19 mA at this load Shutdown mode: Currently not used, but may be ...

[Learn More](#)

[Power Measurements on AC-DC Power Supplies](#)

Power supply designers strive to improve the efficiency of their designs while maintaining specified performance over a range of input and load conditions and complying ...

[Learn More](#)



[How to Check a Power Supply: PSU Tester, Paperclip, & More](#)

If you can't find a PSU tester, you can check to see if the power supply is completely dead by doing a quick paperclip test or by measuring the power supply's voltage ...

[Learn More](#)



[Base load and Peak Load on Power Station:](#)

Referring to the load curve of Fig. 3.13, it is clear that there are peak demands of load excluding base load. These peak demands of the station generally form a small part of the total load and ...

[Learn More](#)



[How To Measure Output Current Of Power Supply? Step-by ...](#)

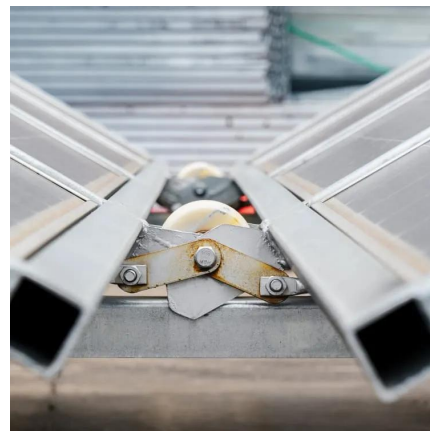
How to Measure Output Current of Power Supply? Learn the tools, safety precautions, step-by-step guide, common errors, and result interpretation.

[Learn More](#)

[How to Manually Test a Power Supply With a Multimeter](#)

How to Manually Test a Power Supply With a Multimeter Testing a power supply manually using a multimeter is an essential skill for anyone involved in electronics, whether as ...

[Learn More](#)



Contact Us

For catalog requests, pricing, or partnerships, please visit:
<https://www.fundacjawandea-imk.pl>



Scan QR Code for More Information



<https://www.fundacjawandea-imk.pl>