

Installation of solar panels on island sloped roof





Overview

What is solar panel roof mounting?

Solar panel roof mounting is the process of securely attaching photovoltaic panels to your home's roof structure using specialized mounting systems. This critical installation step determines both the safety and performance of your solar energy system for decades to come.

Where should photovoltaic panels be installed?

The choice of location is a critical factor during the installation of photovoltaic panels. Roofs—flat or sloped—are the most common installation sites, offering excellent sun exposure and energy production optimization. However, in some cases, such as when the roof is unsuitable, ground installation may be a better option.

How do you install a solar roof?

Installation involves drilling through shingles into rafters and sealing with flashing. Standing seam metal roofs are ideal for solar installation, using non-penetrating clamps that attach to the seams. Corrugated metal requires specialized brackets secured with galvanized screws. Clay, concrete, and Spanish tiles present unique challenges.

Do I need a structural assessment before installing solar panels?

Before mounting solar panels, your roof must undergo a thorough structural assessment. Solar panels and mounting equipment add approximately 3-4 pounds per square foot of additional load to your roof structure. Key evaluation factors include: If your roof needs replacement, complete this work before solar installation.



Installation of solar panels on island sloped roof



[How to install solar energy on a sloping roof ...](#)

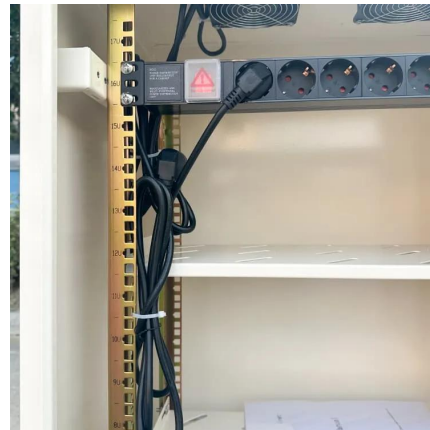
Furthermore, decreased reliance on traditional energy sources leads to reduced overall carbon footprints, promoting a healthier planet. In summary, the decision to install solar energy on a sloping roof building ...

[Learn More](#)

Is It Safe to Install Photovoltaic Panels on a Sloping Roof? A

A Comprehensive Guide Imagine your roof as a ski slope - but instead of snowboarders, it's hosting sleek photovoltaic panels harvesting sunlight. The question isn't whether solar panels ...

[Learn More](#)



[Solar System Installation For Sloped Roofs](#)

Understanding The Basics of Solar Panel Placement The position and angle of solar panels are crucial for maximizing energy absorption. For sloped roofs, this is easier because they often ...

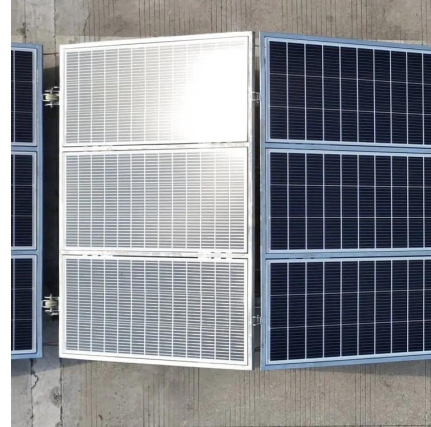
[Learn More](#)

[Installation of PV panels on the ground, roof, ...](#)

The choice of location is a critical factor during the installation of photovoltaic panels. Roofs--flat or sloped--are the most common installation sites, offering excellent sun exposure and energy production optimization. ...



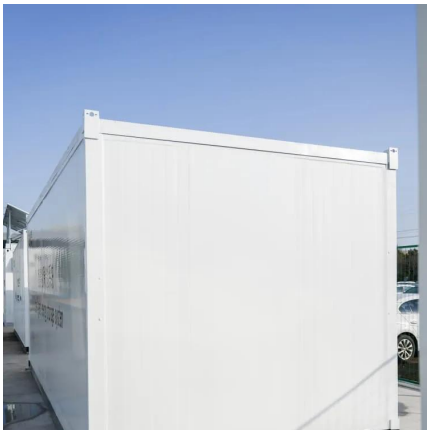
[Learn More](#)



Complete Guide: How to Install a Solar Panel on a Sloped Roof

Looking to install solar panels on a sloped roof? Discover this step-by-step guide on how to install solar panels, key considerations, and tips for a successful installation.

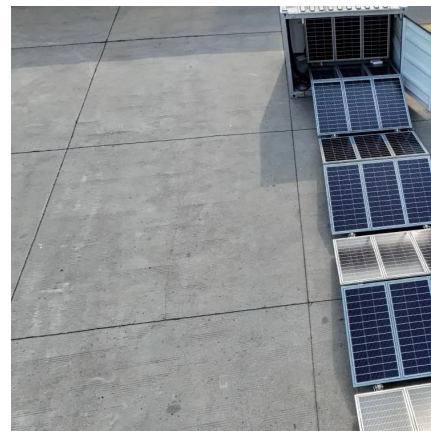
[Learn More](#)



[How to install solar energy on a slope , NenPower](#)

To effectively install solar energy systems on sloped surfaces, one must consider a range of factors. 1. Assessing slope requirements is essential, as the degree of incline ...

[Learn More](#)



[Solar Roof Installation 2025: Complete Guide to Cost, ...](#)

The Ultimate Guide to Solar Roof Installation in 2025 Installing solar panels on your roof is one of the most effective ways to generate clean energy, reduce electricity bills, and increase ...

[Learn More](#)





How to Install Solar Panels on a Sloped Roof: Step-by-Step ...

Learn how to effectively install solar panels on a sloped roof with our detailed guide. Discover the benefits, step-by-step installation process, safety tips, and maintenance advice to maximize ...

[Learn More](#)



How To Mount Solar Panels To The Roof: Complete 2025 ...

Learn how to safely mount solar panels to your roof with our step-by-step guide. Covers all roof types, tools needed, safety tips, and when to hire professionals.

[Learn More](#)



Can solar panels be installed on a sloped roof?

If you're thinking about installing solar panels on your sloped roof, I'd love to help. As a solar panel supplier, I have a wide range of high - quality solar panels and experienced ...

[Learn More](#)



How to install solar energy on a slope

To effectively install solar energy systems on sloped surfaces, one must consider a range of factors. 1. Assessing slope requirements is essential, as the degree of incline impacts solar panel efficiency and ...

[Learn More](#)

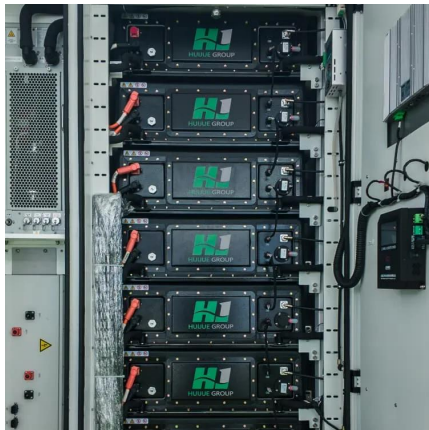




[How To Mount Solar Panels To The Roof: ...](#)

Learn how to safely mount solar panels to your roof with our step-by-step guide. Covers all roof types, tools needed, safety tips, and when to hire professionals.

[Learn More](#)



Installation of PV panels on the ground, roof, balcony or ...

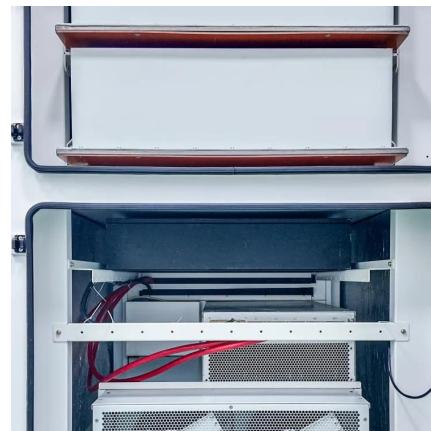
The choice of location is a critical factor during the installation of photovoltaic panels. Roofs--flat or sloped--are the most common installation sites, offering excellent sun exposure and energy ...

[Learn More](#)

[How to install solar energy on a sloping roof building](#)

Furthermore, decreased reliance on traditional energy sources leads to reduced overall carbon footprints, promoting a healthier planet. In summary, the decision to install solar ...

[Learn More](#)



Contact Us

For catalog requests, pricing, or partnerships, please visit:
<https://www.fundacjawandea-imk.pl>



Scan QR Code for More Information



<https://www.fundacjawandea-imk.pl>