

Latvia 5g communication high voltage power base station





Overview

How does 5G work in Latvia?

On board Latvian port service provider LVR Flote's Varma icebreaker ship, the LMT has deployed 5G connectivity that can be delivered as far as 53km from the base station. Pilot boats and floating drones are all part of an intricate system to broadcast seabed measurements and remote video transmissions.

What is a 5G base station energy storage device?

During main power failures, the energy storage device provides emergency power for the communication equipment. A set of 5G base station main communication equipment is generally composed of a baseband BBU unit and multiple RF AAU units. Equation 1 serves as the base station load model:.

Will 5G help Latvia's border security?

Latvia has recently accused Belarus of letting illegal migrants cross into Latvia. This is an instance where border security, police, and military need to collaborate. Not all of these units would have access to the traditional military "green radio." However, 5G has the potential to simplify coordination and collaboration at the country's borders.

What is 5G techritory in Riga?

The 5G Techritory event in Riga was developed eight years ago to highlight this expertise and invite big names from the telecoms industry to use Latvia as a national testbed and a playground for technological innovation. He adds the country already has shared its expertise and innovations with the likes of Ukraine and Moldova.



Latvia 5g communication high voltage power base station



[5G on the frontline in Latvia](#)

Fighting fire with 5G Since the war in Ukraine began in 2022, relations between Latvia and Russia have completely "frozen", says Sergejs Potapkins, a researcher at the ...

[Learn More](#)

[LMT and LVR Fleet showcase first-ever fully-functioning ...](#)

The demonstration showcased the 5G multi-hop principle as it ensured communication between several LVR Fleet vessels. A pilot boat, DORE, delivered stable 5G ...

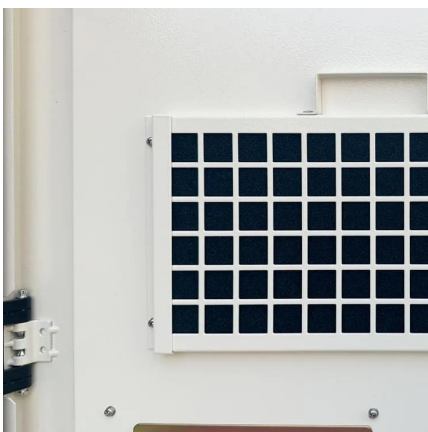
[Learn More](#)



Coordinated scheduling of 5G base station energy storage for voltage

During main power failures, the energy storage device provides emergency power for the communication equipment. A set of 5G base station main communication equipment is ...

[Learn More](#)

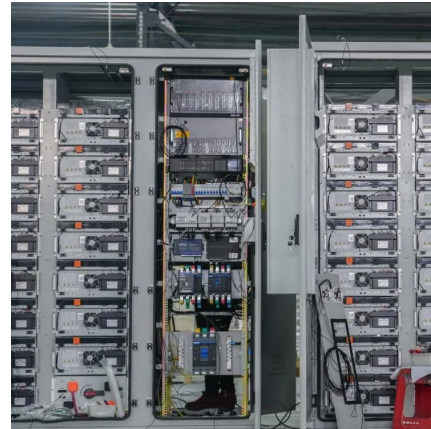


A Voltage-Level Optimization Method for DC Remote Power Supply of 5G

Unlike the concentrated load in urban area base stations, the strong dispersion of loads in suburban or highway base stations poses significant challenges to traditional power ...



[Learn More](#)



[A Voltage-Level Optimization Method for DC ...](#)

Unlike the concentrated load in urban area base stations, the strong dispersion of loads in suburban or highway base stations poses significant challenges to traditional power supply methods in terms of ...

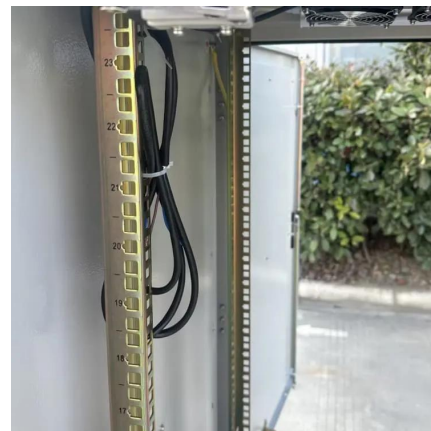
[Learn More](#)



[LMT will Install 100 5G Base Stations This Year](#)

Latvia's leading mobile operator and technology innovation company LMT by the end of 2021 plans to install 100 5G base stations throughout Latvia. As a result, 5G capabilities ...

[Learn More](#)



[Study on Power Feeding System for 5G Network](#)

High Voltage Direct Current (HVDC) power supply HVDC systems are mainly used in telecommunication rooms and data centers, not in the Base station. With the increase of ...

[Learn More](#)



[5G on the frontline in Latvia](#)



Fighting fire with 5G Since the war in Ukraine began in 2022, relations between Latvia and Russia have completely "frozen", says Sergejs Potapkins, a researcher at the Latvian Institute of International Affairs and ...

[Learn More](#)



[LMT creates the widest 5G network in Latvia ...](#)

The 5G network developed by LMT with more than 160 5G base stations throughout Latvia already provides the opportunity for effective solutions in the cities, countryside and forests, in the air and under water, ...

[Learn More](#)



[LMT will Install 100 5G Base Stations This Year ...](#)

Latvia's leading mobile operator and technology innovation company LMT by the end of 2021 plans to install 100 5G base stations throughout Latvia. As a result, 5G capabilities will be available to even ...

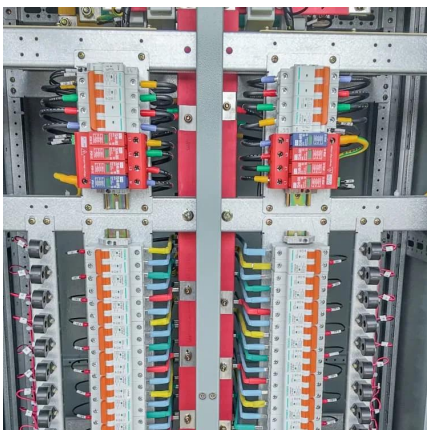
[Learn More](#)



[Energy Management of Base Station in 5G and B5G: Revisited](#)

Since mmWave base stations (gNodeB) are typically capable of radiating up to 200-400 meters in urban locality. Therefore, high density of these stations is required for ...

[Learn More](#)

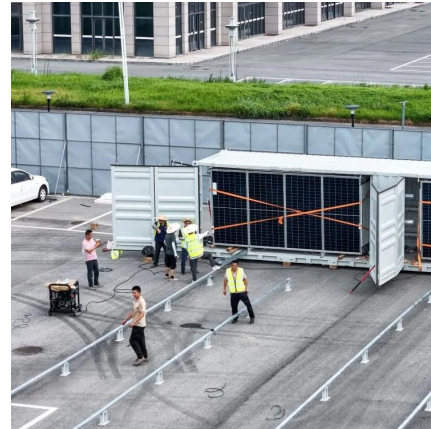


[Latvian High Frequency Communication BESS Power Station](#)



Latvia's transmission system operator Augstsprieguma tīkls (AST) has commissioned two utility-scale battery energy storage systems (BESS) in Rezekne and Tume, describing the milestone ...

[Learn More](#)



LMT creates the widest 5G network in Latvia and significantly ...

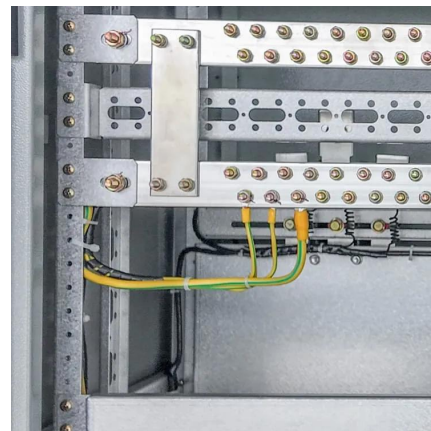
The 5G network developed by LMT with more than 160 5G base stations throughout Latvia already provides the opportunity for effective solutions in the cities, ...

[Learn More](#)

[5G TECHNOLOGY TAKES SEVERAL STEPS FORWARD IN LATVIA](#)

5g base station communication in the UK Investing in the communication infrastructure transition requires significant scientific consideration of challenges, prioritisation, risks and uncertainties. ...

[Learn More](#)



[Coordinated scheduling of 5G base station ...](#)

During main power failures, the energy storage device provides emergency power for the communication equipment. A set of 5G base station main communication equipment is generally composed of a ...

[Learn More](#)



Contact Us

For catalog requests, pricing, or partnerships, please visit:
<https://www.fundacjawandea-imk.pl>

Scan QR Code for More Information



<https://www.fundacjawandea-imk.pl>