

# **Network base station communication**





## Overview

---

What is a base station in a telecommunications network?

A base station is a critical component in a telecommunications network. A fixed transceiver that acts as the central communication hub for one or more wireless mobile client devices. In the context of cellular networks, it facilitates wireless communication between mobile devices and the core network.

Why is a base station important in wireless communication?

A base station is fundamental in wireless communication, because it facilitates the connection between your device and the wider network. Without base stations, mobile data and voice services would be impossible, as there would be no infrastructure to handle the transmission of signals.

What is a base station and how does it work?

A base station is a fixed point of communication between mobile devices and the wider telecom network. It transmits and receives radio signals, enabling your phone to access voice, data, and internet services. Together, thousands of base stations form a seamless web of coverage known as a cellular network. How Does It Work?

.

What is a wireless base station?

A base station represents an access point for a wireless device to communicate within its coverage area. It usually connects the device to other networks or devices through a dedicated high bandwidth wire of fiber optic connection. Base stations typically have a transceiver, capable of sending and receiving wireless signals;



## Network base station communication

---



### What Is a Base Station? Exploring the Core of 5G Networks ...

The base station is an indispensable piece of infrastructure in the mobile communication network, silently supporting every phone call, message, and network ...

[Learn More](#)

### [What Is A Base Station?](#)

A base station is an integral component of wireless communication networks, serving as a central point that manages the transmission and reception of signals between ...

[Learn More](#)



### [What is a base station?](#)

What is a base station? In telecommunications, a base station is a fixed transceiver that is the main communication point for one or more wireless mobile client devices. A base ...

[Learn More](#)



### [What is a Base Station in ...](#)

Discover the role and functionality of a base station in telecommunications networks. Learn how these critical components manage communication between mobile devices and the network, ensuring robust connectivity.



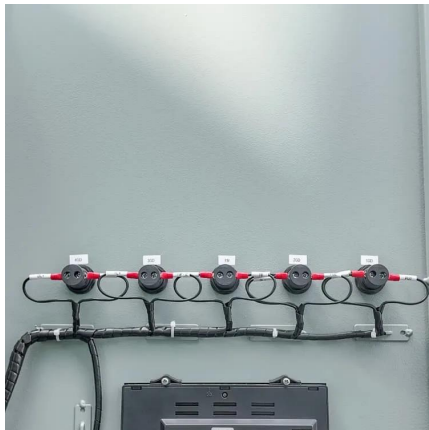
[Learn More](#)



### What Is the Role of a Base Station in Wireless Communication?

Base stations are the backbone of wireless communication networks, playing a pivotal role in signal transmission, network reliability, and high-speed data connectivity. As ...

[Learn More](#)



### What Does a Base Station Do and Why Is It Essential for ...

A base station is a fixed point of communication between mobile devices and the wider telecom network. It transmits and receives radio signals, enabling your phone to access ...

[Learn More](#)



### What is a Base Station in Telecommunications?

Discover the role and functionality of a base station in telecommunications networks. Learn how these critical components manage communication between mobile devices and the network, ...

[Learn More](#)





## [Base Stations: The Core and Future of Telecom Networks](#)

A telecom base station, also known as a mobile communication base station, is a wireless communication device comprised of antennas, transmitters, and controllers. It ...

[Learn More](#)



## **Base Stations**

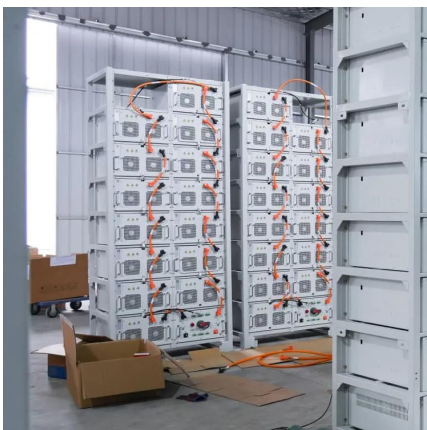
Base stations form a key part of modern wireless communication networks because they offer some crucial advantages, such as wide coverage, continuous communications and ...

[Learn More](#)

## [Base Station's Role in Wireless Communication Networks](#)

A base station is a critical component of wireless communication networks. It serves as the central point of a network that connects various devices, such as smartphones, tablets, and computers.

[Learn More](#)



## **Understanding Base Stations: The Backbone of Wireless Communication**

Additionally, 5G base stations will rely heavily on network slicing and edge computing to provide customized network experiences for different applications, ranging from ...

[Learn More](#)



## Contact Us

---

For catalog requests, pricing, or partnerships, please visit:  
<https://www.fundacjawandea-imk.pl>

### Scan QR Code for More Information



<https://www.fundacjawandea-imk.pl>