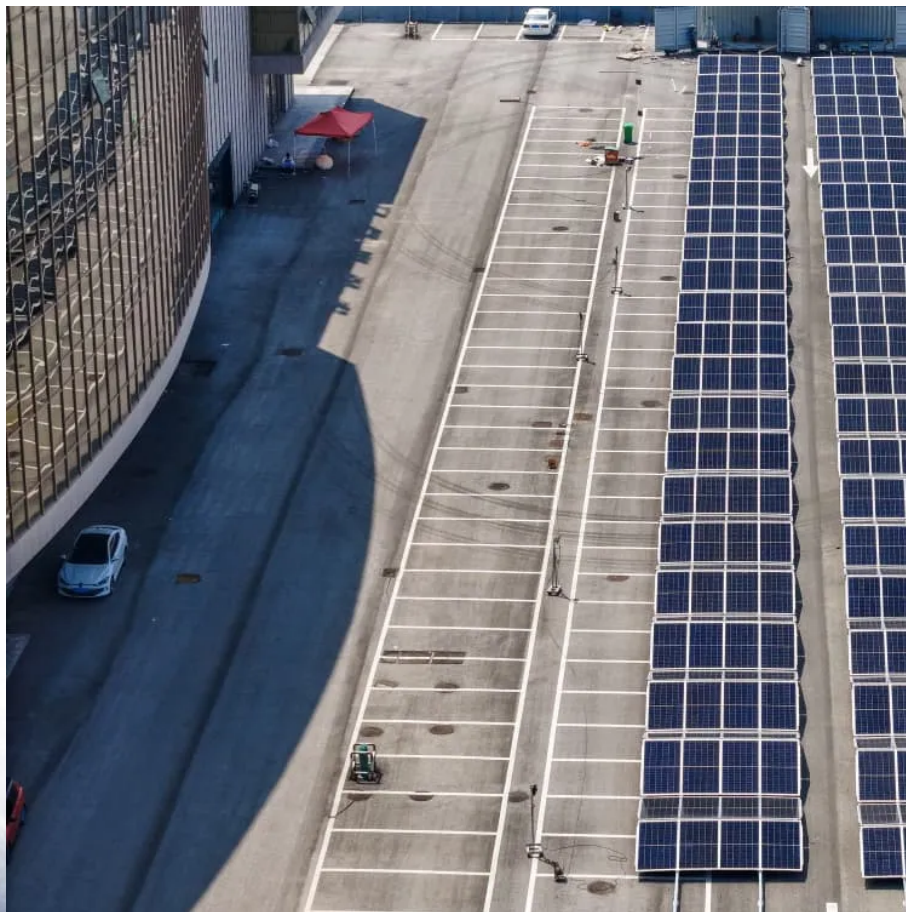


Resonant columns are used in solar container communication stations for wind and solar complementarity





Overview

This review aims to identify the available methodologies, data, and techniques for mapping the potential of solar and wind energy and its complementarity and to provide significant research and patents regarding.

Does solar and wind energy complementarity reduce energy storage requirements?

This study provided the first spatially comprehensive analysis of solar and Wind energy Complementarity on a global scale. In addition, it showed which regions of the world have a greater degree of Complementarity between Wind and solar energy to reduce energy storage requirements.

How to analyze complementarity of wind and solar energy?

Analyzing the complementarity of wind and solar energies requires the collection of multidisciplinary information, in which the primary criterion for deliberating the implementation of hybrid systems is related to mapping the weather conditions of a given location.

Why do we need a regional approach to photovoltaic power?

Additionally, it emphasizes the relevance of photovoltaic (P.V.) power in minimizing the necessity for large reservoirs due to its limited seasonality. Adopting a regional approach enhances Complementarity, reduces the need for extensive energy storage, and facilitates higher integration of P.V. power.

What is complementarity between wind and photovoltaic sources?

The work analyzed the complementarity between wind and photovoltaic sources when applied to on-grid and isolated micro-networks. The relative fluctuation rate was used as an index to quantify the complementarity between these sources. This index quantifies the mismatch between the equivalent power generated and the demand curve.



Resonant columns are used in solar container communication station



[Wind-solar hybrid for outdoor communication base ...](#)

Integrated Solar-Wind Power Container for Communications This large-capacity, modular outdoor base station seamlessly integrates photovoltaic, wind power, and energy ...

[Learn More](#)



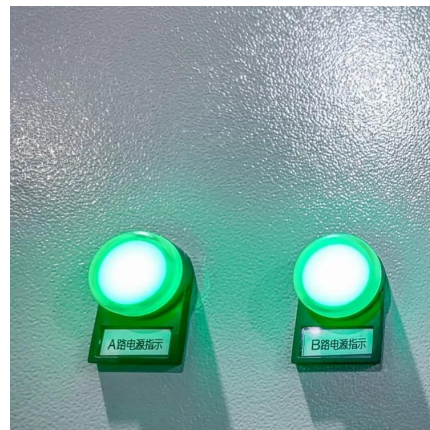
The role of wind and solar complementarity in communication base stations

A review on the complementarity between grid-connected solar o The paper proposes an ideal complementarity analysis of wind and solar sources. o Combined wind and solar generation ...

[Wind-Solar Complementarity and Effective ...](#)

A multi-period, multi-resource optimal power flow approach is used to optimally configure wind and solar photovoltaic capacity to maximise energy production whilst complying with network physical

[Learn More](#)



A review of hybrid renewable energy systems: Solar and wind ...

Solar energy generation is contingent upon daylight and clear weather conditions, whereas wind energy is unpredictable, depending on fluctuating wind speeds. The ...

[Learn More](#)



[Learn More](#)



[Wind-Solar Complementarity and Effective Use of](#)

A multi-period, multi-resource optimal power flow approach is used to optimally configure wind and solar photovoltaic capacity to maximise energy production whilst complying ...

[Learn More](#)



[Integrated Solar-Wind Power Container for Communications](#)

This large-capacity, modular outdoor base station seamlessly integrates photovoltaic, wind power, and energy storage to provide a stable DC48V power supply and optical distribution. Perfect ...

[Learn More](#)



[Operating communication base stations with wind and ...](#)

The wind-solar-diesel hybrid power supply system of the communication base station is composed of a wind turbine, a solar cell module, an integrated controller for hybrid energy

[Learn More](#)





WIND AND SOLAR HYBRID GENERATION SYSTEM FOR COMMUNICATION ...

The global solar storage container market is experiencing explosive growth, with demand increasing by over 200% in the past two years. Pre-fabricated containerized solutions now ...

[Learn More](#)



WIND AND SOLAR HYBRID GENERATION SYSTEM FOR COMMUNICATION ...

20kW wind solar hybrid power generation system efficiently combines wind and solar energy for high-capacity, off-grid or backup power. Ideal for remote areas, farms, and commercial use, it ...

[Learn More](#)



Review of mapping analysis and complementarity between solar and wind

This review aims to identify the available methodologies, data, and techniques for mapping the potential of solar and wind energy and its complementarity and to provide ...

[Learn More](#)



Solar Power Supply Systems for Communication Base Stations...

In today's rapidly evolving communication technology landscape, stable and reliable power supply remains crucial for ensuring the normal operation of communication networks. Especially in ...

[Learn More](#)





Contact Us

For catalog requests, pricing, or partnerships, please visit:
<https://www.fundacjawandea-imk.pl>

Scan QR Code for More Information



<https://www.fundacjawandea-imk.pl>