

Shared power 5G base station facility design





Overview

Shared energy storage (SES) system can provide energy storage capacity leasing services for large-scale PV integrated 5G base stations (BSs), reducing the energy cost of 5G BS and achieving high effi.

Are 5G base stations a flexible resource for power systems?

The authors declare no conflicts of interest. Abstract 5G base stations (BSs) are potential flexible resources for power systems due to their dynamic adjustable power consumption. However, the ever-increasing energy consumption of 5G BSs place.

What is a 5G base station energy storage device?

During main power failures, the energy storage device provides emergency power for the communication equipment. A set of 5G base station main communication equipment is generally composed of a baseband BBU unit and multiple RF AAU units. Equation 1 serves as the base station load model:.

What equipment is used in a 5G base station?

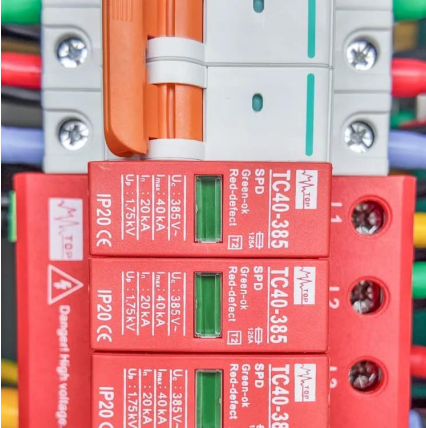
AAU is the most energy-consuming equipment in 5G base stations, accounting for up to 90% of their total energy consumption. Auxiliary equipment includes power supply equipment, monitoring and lighting equipment. The power supply equipment manages the distribution and conversion of electrical energy among equipment within the 5G base station.

Are 5G base stations more energy efficient than 4G BSS?

However, due to the utilization of massive antennas and higher frequency bands, the energy consumption of 5G base stations (BSs) is much higher than that of 4G BSs, which incurs huge operation costs and significantly increases carbon emissions under traditional power supply mode .



Shared power 5G base station facility design



[Power Consumption Modeling of 5G Multi-Carrier Base ...](#)

However, there is still a need to understand the power consumption behavior of state-of-the-art base station architectures, such as multi-carrier active antenna units (AAUs), ...

[Learn More](#)

Modeling 5G shared base station planning problem using an ...

Abstract With the cost of 5G network construction surges, Base Station (BS) sharing is becoming more and more popular among operators nowadays. A typical scenario of ...

[Learn More](#)



[Research on 5G Base Station Shared Power ...](#)

This overview highlights the technology's potential to accelerate 5G rollout, with global adoption projected to cover 40% of new deployments by 2025. 3. Design Considerations Designing shared power towers for 5G base ...

[Learn More](#)



Exploring power system flexibility regulation potential based ...

5G base stations (BSs) are potential flexible resources for power systems due to their dynamic adjustable power consumption. However, the ever-increasing energy ...



[Learn More](#)



Optimal capacity planning and operation of shared energy ...

A dynamic capacity leasing model of shared energy storage system is proposed with consideration of the power supply and load demand characteristics of large-scale 5G ...

[Learn More](#)



Coordinated scheduling of 5G base station energy storage ...

AAU is the most energy-consuming equipment in 5G base stations, accounting for up to 90% of their total energy consumption. Auxiliary equipment includes power supply ...

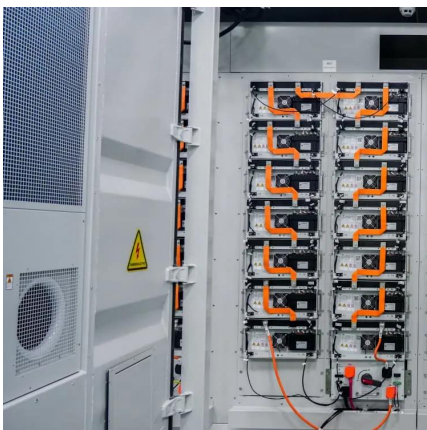
[Learn More](#)



Optimal configuration of 5G base station energy storage

Abstract: The high-energy consumption and high construction density of 5G base stations have greatly increased the demand for backup energy storage batteries. To maximize ...

[Learn More](#)





[Research on 5G Base Station Shared Power Tower Technology](#)

This overview highlights the technology's potential to accelerate 5G rollout, with global adoption projected to cover 40% of new deployments by 2025. 3. Design Considerations Designing ...

[Learn More](#)



[Exploring power system flexibility regulation ...](#)

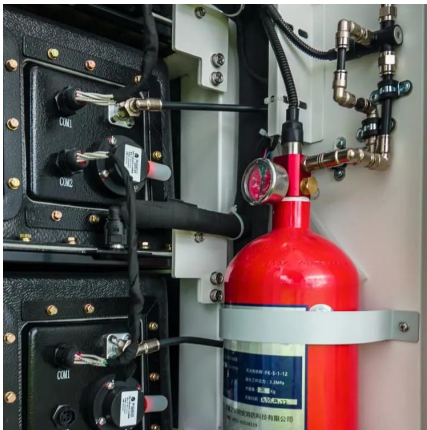
5G base stations (BSs) are potential flexible resources for power systems due to their dynamic adjustable power consumption. However, the ever-increasing energy consumption of 5G BSs places ...

[Learn More](#)

[Energy Management of Base Station in 5G and B5G: Revisited](#)

Since mmWave base stations (gNodeB) are typically capable of radiating up to 200-400 meters in urban locality. Therefore, high density of these stations is required for ...

[Learn More](#)



Optimization-Based Design of Power Architecture for 5G Small Cell Base

PDF , On Oct 11, 2020, Jorge Alejandro May Alvarez and others published Optimization-Based Design of Power Architecture for 5G Small Cell Base Stations , Find, read and cite all the ...

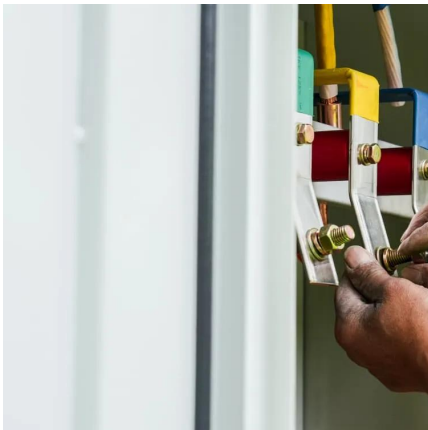
[Learn More](#)



[Optimization-Based Design of Power ...](#)

PDF , On Oct 11, 2020, Jorge Alejandro May Alvarez and others published Optimization-Based Design of Power Architecture for 5G Small Cell Base Stations , Find, read and cite all the research you

[Learn More](#)



Strategy of 5G Base Station Energy Storage Participating ...

The energy storage of base station has the potential to promote frequency stability as the construction of the 5G base station accelerates. This paper proposes a control strategy ...

[Learn More](#)

[Coordinated scheduling of 5G base station ...](#)

AAU is the most energy-consuming equipment in 5G base stations, accounting for up to 90% of their total energy consumption. Auxiliary equipment includes power supply equipment, monitoring and lighting ...

[Learn More](#)



Contact Us

For catalog requests, pricing, or partnerships, please visit:
<https://www.fundacjawandea-imk.pl>



Scan QR Code for More Information



<https://www.fundacjawandea-imk.pl>