

Solar curtain wall of Lisbon office building





Overview

Where is solar XXI building located?

Office building for the Energy Efficiency Unit, LNEG campus, Lisbon SOLAR XXI building is located inside the LNEG campus - National Laboratory of Energy and Geology - in Lisbon. Built in 2006 as part of a research project, its main objective is to be an example of a low energy office building using a combination.

What is a photovoltaic curtain wall?

They enhance thermal comfort and help prevent the greenhouse effect. A standard curtain wall offers no return on investment. In contrast, a photovoltaic curtain wall not only insulates the building but also generates power for over 30 years. This reduces monthly electricity bills and ultimately pays for itself over time.

Do photovoltaic curtain walls improve the cost-effectiveness ratio?

After sensitivity analysis of the cost of photovoltaic curtain walls and the efficiency of solar panels, it was found that as the cost increases, the economy of photovoltaic curtain walls gradually deteriorates, and improving the efficiency of solar panels can improve the cost-effectiveness ratio of each facade.

Does Photovoltaic Glass fit in a curtain wall?

No, the BIPV photovoltaic glass structurally does not differ from other types of conventional glazing. Therefore, it is integrated into the building envelope (curtain wall, façade, or skylight) like any construction material. What solar control and comfort advantages does photovoltaic glass offer in a curtain wall?



Solar curtain wall of Lisbon office building



[Smart facade solution for building energy efficiency](#)

Smart facade solution for building energy efficiency The EU-funded POWERSKIN PLUS project developed prefabricated, modular glazing that features solar panels and energy ...

[Learn More](#)

[Smart facade solution for building energy ...](#)

Smart facade solution for building energy efficiency The EU-funded POWERSKIN PLUS project developed prefabricated, modular glazing that features solar panels and energy storage capabilities. Suitable for ...

[Learn More](#)



SOLAR XXI

Office building for the Energy Efficiency Unit, LNEG campus, Lisbon SOLAR XXI building is located inside the LNEG campus - National Laboratory of Energy and Geology - in Lisbon. ...

[Learn More](#)



[Analysis of the Impact of Photovoltaic Curtain Walls ...](#)

This indicates that photovoltaic curtain wall technology has the potential to reduce building carbon emissions. Further promoting the development of production technology and ...



[Learn More](#)



Pedro Cabrito , Isabel Diniz arquitectos, Daniel Malhão · SOLAR XXI

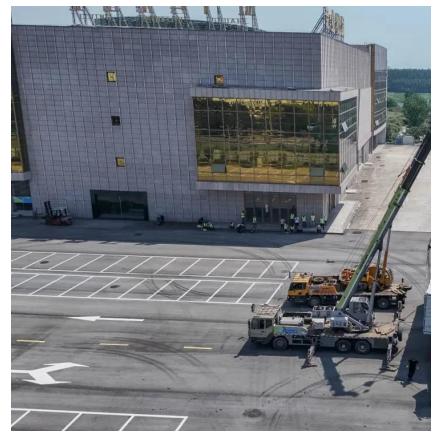
SOLAR XXI building is located inside the LNEG campus - National Laboratory of Energy and Geology - in Lisbon. Built in 2006 as part of a research project, its main objective is to be an ...

[Learn More](#)

[Curtain Walls: Boosting Energy Efficiency in Buildings](#)

Discover how curtain walls enhance energy efficiency in commercial buildings, reduce energy costs, and meet sustainability goals with advanced features.

[Learn More](#)



Pedro Cabrito , Isabel Diniz arquitectos, Daniel Malhão · ...

SOLAR XXI building is located inside the LNEG campus - National Laboratory of Energy and Geology - in Lisbon. Built in 2006 as part of a research project, its main objective is to be an ...

[Learn More](#)

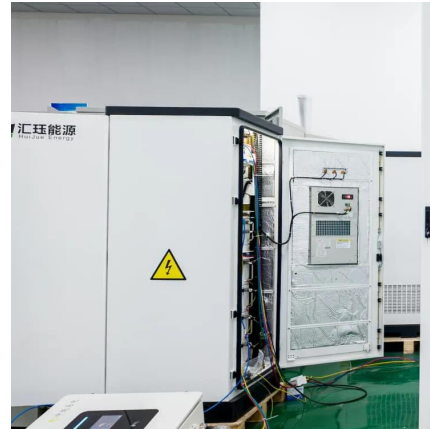




06 Solar XXI Building_vs2

Basic information Location: Lumiar, Lisbon, Portugal Climate: Mediterranean (South Europe) Project brief: The Solar XXI building is the new office building with laboratories ...

[Learn More](#)



Curtain Walls & Spandrels

Both curtain walls and spandrels from Onyx Solar elevate your building's sustainability and aesthetic appeal, providing customizable options and cutting-edge design. ...

[Learn More](#)

Optimisation of curtain wall façades for office buildings by ...

The energy efficiency and the comfort conditions of air-conditioned buildings highly depend on building envelope construction, since façades are responsible for heat losses, solar ...

[Learn More](#)



SOLAR XXI: A Portuguese Office Building towards Net ...

SOLAR XXI Building Solar XXI building was built in Lisbon in 2006 as a demonstration project [1], [2]. The building is considered a very high efficient building, from the national regulation point ...

[Learn More](#)



[Curtain Walls & Spandrels](#)

Both curtain walls and spandrels from Onyx Solar elevate your building's sustainability and aesthetic appeal, providing customizable options and cutting-edge design. Explore how our advanced glazing technologies ...

[Learn More](#)



SOLAR XXI

Office building for the Energy Efficiency Unit, LNEG campus, Lisbon SOLAR XXI building is located inside the LNEG campus - National Laboratory of Energy and Geology - in Lisbon. Built in 2006 as part of a research ...

[Learn More](#)

[A passive solar Office Building in Portugal](#)

The Solar XXI is an office and laboratory building, in INETI Campus in Lisbon (Portugal) with a total area of 1500 m2 with 3 floors; one is buried in the south façade (Figure ...

[Learn More](#)



Contact Us

For catalog requests, pricing, or partnerships, please visit:
<https://www.fundacjawandea-imk.pl>



Scan QR Code for More Information



<https://www.fundacjawandea-imk.pl>