

The inverter can be directly connected to the grid





Overview

How does a solar inverter work?

For safe and reliable integration with the electric grid, the solar inverter must precisely synchronize its AC output with the grid's voltage, frequency, and phase characteristics. This process, known as grid synchronization, is essential for ensuring a stable power flow, preventing equipment damage, and maintaining grid stability.

How do inverters provide grid services?

In order to provide grid services, inverters need to have sources of power that they can control. This could be either generation, such as a solar panel that is currently producing electricity, or storage, like a battery system that can be used to provide power that was previously stored.

What is a grid-tied inverter?

A grid-tied inverter solely designed for solar-to-grid applications, with no battery support. It provides efficient solar energy conversion and direct grid feed-in but cannot store energy. Ideal for locations with stable grid access and net metering policies, where users aim to offset electricity bills without investing in battery systems.

How do grid-following inverters work?

Traditional "grid-following" inverters require an outside signal from the electrical grid to determine when the switching will occur in order to produce a sine wave that can be injected into the power grid. In these systems, the power from the grid provides a signal that the inverter tries to match.



The inverter can be directly connected to the grid



Understanding Grid Tie Inverter Circuit for Solar Energy ...

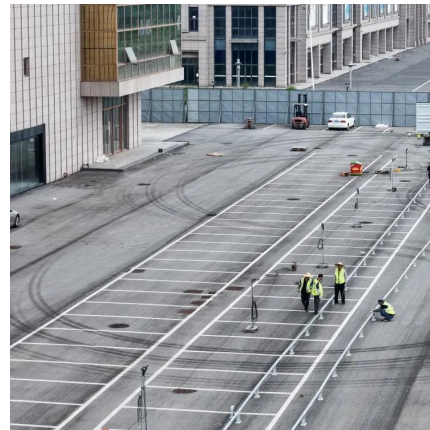
Grid tie inverters are essential for a variety of solar power system applications that are directly connected to the public electrical grid. In this case, the grid tie inverter circuit ...

[Learn More](#)

[Solar Integration: Inverters and Grid Services ...](#)

For instance, a network of small solar panels might designate one of its inverters to operate in grid-forming mode while the rest follow its lead, like dance partners, forming a stable grid without any turbine-based ...

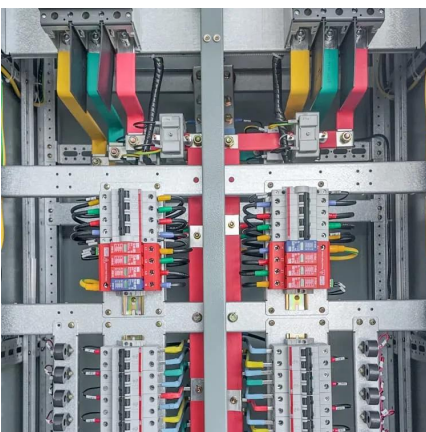
[Learn More](#)



[Understanding Solar Inverters: On-Grid, Off-Grid and Hybrid](#)

On-grid inverters offer simplicity and cost savings for grid-connected users, while off-grid systems provide complete independence in remote or unstable regions.

[Learn More](#)



[Connecting an On-Grid Solar Inverter: A Comprehensive Guide](#)

These inverters are a vital part of solar power systems that connect directly to the public electricity network. This guide will walk you through the process of connecting an on ...



[Learn More](#)



[Does a grid-connected inverter need a grid to operate?](#)

Discover why grid-connected inverters must sync with the grid to operate. Learn how they convert DC to AC, rely on grid frequency/voltage references, and use islanding ...

[Learn More](#)



[Solar Power Grid Connection Explained](#)

Learn how solar power is connected to the electrical grid, how it works, and how net metering benefits homeowners. Discover the role of inverters and grid stability.

[Learn More](#)



[How to Connect Solar Panels to a Grid Tie Inverter](#)

Safely wire your solar panels to a grid-tie inverter. Follow our expert guide on DC configuration, array connection, and AC utility integration.

[Learn More](#)



[Can a Hybrid Inverter Work with Solar Panels Only?](#)



This article walks through how hybrid inverters work with solar only, the typical operating modes, the pros and cons, when this setup makes sense, and when a simple grid ...

[Learn More](#)



[Grid-Connected Inverters: The Ultimate Guide](#)

Discover the crucial role of grid-connected inverters in Smart Grids, their benefits, and the technology behind them.

[Learn More](#)



[Solar Integration: Inverters and Grid Services Basics](#)

For instance, a network of small solar panels might designate one of its inverters to operate in grid-forming mode while the rest follow its lead, like dance partners, forming a ...

[Learn More](#)



How Does a Solar Inverter Synchronize with Grid , Complete ...

For safe and reliable integration with the electric grid, the solar inverter must precisely synchronize its AC output with the grid's voltage, frequency, and phase ...

[Learn More](#)



[Connecting an On-Grid Solar Inverter: A...](#)



These inverters are a vital part of solar power systems that connect directly to the public electricity network. This guide will walk you through the process of connecting an on-grid solar inverter, ensuring a ...

[Learn More](#)



[Does a grid-connected inverter need a grid to ...](#)

Discover why grid-connected inverters must sync with the grid to operate. Learn how they convert DC to AC, rely on grid frequency/voltage references, and use islanding protection for safety. Ideal for solar and ...

[Learn More](#)



Contact Us

For catalog requests, pricing, or partnerships, please visit:
<https://www.fundacjawandea-imk.pl>

Scan QR Code for More Information



<https://www.fundacjawandea-imk.pl>