

Use inverter to battery





Overview

What does a battery inverter do?

The inverter is responsible for converting DC (direct current) power stored in the battery into AC (alternating current) power, which is what most household appliances and electronic devices require to operate.

Do inverters need batteries?

For most residential and small commercial setups, the traditional battery and power inverter combo is the preferred choice to ensure continuous power supply during blackouts. So, while some inverter types do not require batteries, if your priority is uninterrupted backup power, investing in a quality battery in inverter system is essential.

How to connect inverter to battery?

A fuse or circuit breaker should be installed as part of the process of how to connect inverter to battery. Double-check polarity: ensure the positive and negative terminals of the battery match the corresponding terminals on the inverter. Reversing polarity can cause irreversible damage to the system and present safety hazards.

How do you use a car battery inverter?

Place the inverter on a stable surface 8. Connect the Positive battery clip to the battery positive terminal. 9. Connect the negative battery clip to a metal part of the vehicle frame. 10. Connect an appliance cord plug into the inverter or a USB power cord into the inverter. 11. Turn ON the inverter and use the appliance.



Use inverter to battery



How to connect inverter to battery: a step-by-step guide for ...

Battery: The battery should be suitable for your inverter's voltage and power requirements. Common battery types include lead-acid, AGM, and lithium-ion batteries, all of ...

[Learn More](#)

How to Safely Connect a Battery to an Inverter: A Step-by ...

Learn how to safely connect your batteries to your inverter with our guide. Avoid common wiring mistakes to optimize performance and extend system life.

[Learn More](#)



[How to Connect an Inverter to a Battery: Step ...](#)

Learn how to safely and efficiently connect an inverter to a battery with our step-by-step guide. Includes brand-specific tips for Solis, Deye, Megarevo, SRNE, and more. Perfect for DIY enthusiasts and ...

[Learn More](#)



[How to Wire Inverter to Battery - No Sparks, Just Power](#)

How to wire an inverter to a battery? Connect the inverter's positive and negative terminals to the battery, add a fuse on the positive line, and double-check polarity. Key ...



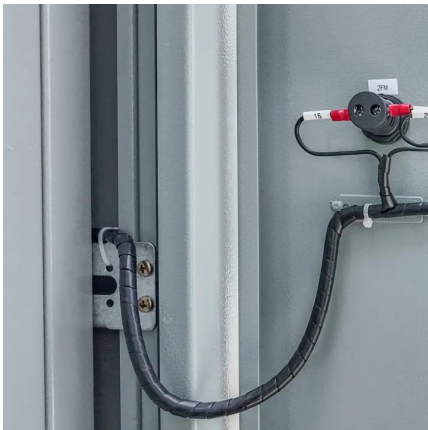
[Learn More](#)



[Inverter Battery Connection: Essential Tips For Safe And ...](#)

Learn essential tips for safe and efficient inverter battery connection. Discover step-by-step guides, wiring techniques, and troubleshooting tips to optimize your power backup system's ...

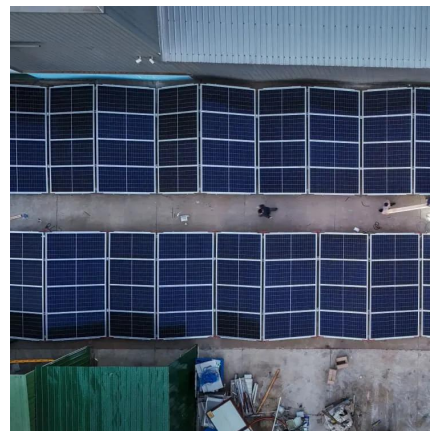
[Learn More](#)



[How to connect inverter to battery: a step-by ...](#)

Battery: The battery should be suitable for your inverter's voltage and power requirements. Common battery types include lead-acid, AGM, and lithium-ion batteries, all of which are integral to understanding ...

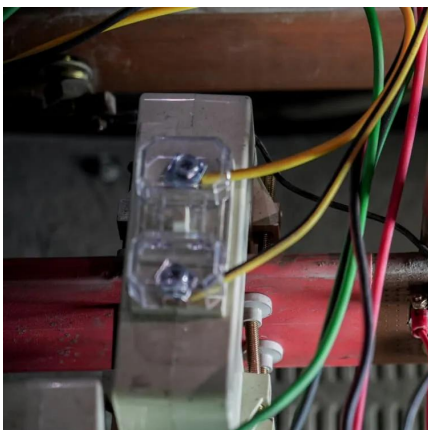
[Learn More](#)



[How to Hook Up a Power Inverter to a Battery](#)

Temporary Inverter Connection to Battery First I will go through the process for a temporary connection if you want to use a portable inverter with a car or other off-grid battery source. If you want to mount an inverter in place for ...

[Learn More](#)





How to Connect an Inverter to a Battery: Step-by-Step Guide ...

Learn how to safely and efficiently connect an inverter to a battery with our step-by-step guide. Includes brand-specific tips for Solis, Deye, Megarevo, SRNE, and more. Perfect ...

[Learn More](#)



[How to Connect a Large or Small Inverter to a Battery](#)

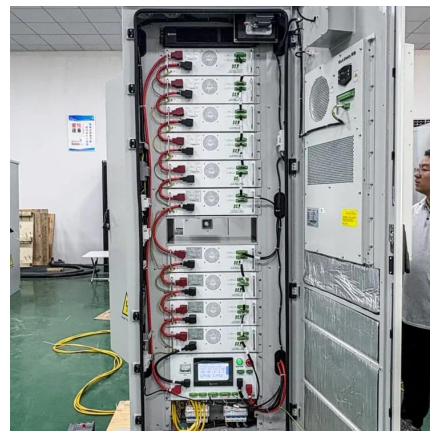
by: Justin Gray This blog answers questions about which inverters can be powered by 12V DC accessory outlets (cigarette lighter sockets) and which require wiring ...

[Learn More](#)

Power Inverter: Can I Hook It Directly to the Battery for Safe

Can I Hook a Power Inverter Directly to the Battery? Yes, you can hook a power inverter directly to the battery. This setup is common for many applications, such as in vehicles ...

[Learn More](#)



[How to Hook Up a Power Inverter to a Battery](#)

Temporary Inverter Connection to Battery First I will go through the process for a temporary connection if you want to use a portable inverter with a car or other off-grid battery source. If ...

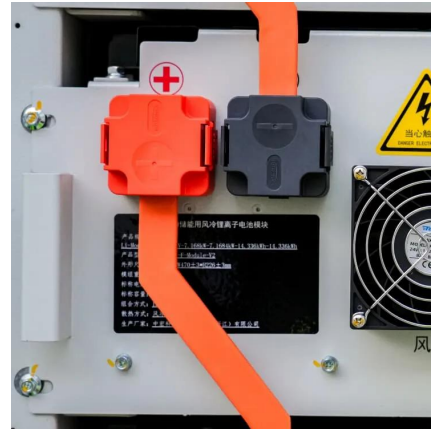
[Learn More](#)



Ultimate Guide to Battery in Inverter: Choose & Maintain Right

Discover how to choose, maintain, and maximize your battery in inverter for reliable backup power. Expert tips on inverter batteries, lifespan, and safety included!

[Learn More](#)



[Can I Use an Inverter to Charge a Battery](#)

Yes, you can use an inverter to charge a battery, but there are several important considerations. Inverters are devices that convert DC (direct current) power from a battery or ...

[Learn More](#)



[How to Connect a Large or Small Inverter to a ...](#)

by: Justin Gray This blog answers questions about which inverters can be powered by 12V DC accessory outlets (cigarette lighter sockets) and which require wiring directly to a battery. In addition to that, ...

[Learn More](#)



[How to Wire Inverter to Battery - No Sparks...](#)

How to wire an inverter to a battery? Connect the inverter's positive and negative terminals to the battery, add a fuse on the positive line, and double-check polarity. Key Takeaways Match inverter and battery ...

[Learn More](#)





Contact Us

For catalog requests, pricing, or partnerships, please visit:
<https://www.fundacjawandea-imk.pl>

Scan QR Code for More Information



<https://www.fundacjawandea-imk.pl>