

What are the communication devices in the base station





Overview

What is a base station in a telecommunications network?

A base station is a critical component in a telecommunications network. A fixed transceiver that acts as the central communication hub for one or more wireless mobile client devices. In the context of cellular networks, it facilitates wireless communication between mobile devices and the core network.

Why is a base station important in wireless communication?

A base station is fundamental in wireless communication, because it facilitates the connection between your device and the wider network. Without base stations, mobile data and voice services would be impossible, as there would be no infrastructure to handle the transmission of signals.

What are base stations & how do they work?

Base stations are the critical components that enable mobile phones and other devices to connect to cellular networks. Here's how they work in a typical mobile network: Signal Transmission and Reception: Mobile devices communicate with the nearest base station via radio waves.

What is a base station in a Wi-Fi network?

The base station in a Wi-Fi network is a device that connects to an internet service provider (ISP) and enables wireless communication between devices such as computers, smartphones, and tablets. It acts as a central hub for the network, transmitting and receiving data between the devices and the ISP.



What are the communication devices in the base station



[What is a Base Station in Telecommunications?](#)

What is a Base Station? A base station is a critical component in a telecommunications network. A fixed transceiver that acts as the central communication hub for one or more wireless mobile ...

[Learn More](#)

[Base Station's Role in Wireless Communication Networks](#)

A base station is fundamental in wireless communication, because it facilitates the connection between your device and the wider network. Without base stations, mobile data and voice ...

[Learn More](#)



[What is a base station?](#)

In telecommunications, a base station is a fixed transceiver that is the main communication point for one or more wireless mobile client devices.

[Learn More](#)



Base Stations

Base stations are important in the cellular communication as it facilitate seamless communication between mobile devices and the network communication. The demand for ...

[Learn More](#)



[What is a Base Station in ...](#)

What is a Base Station? A base station is a critical component in a telecommunications network. A fixed transceiver that acts as the central communication hub for one or more wireless mobile client devices. In the ...

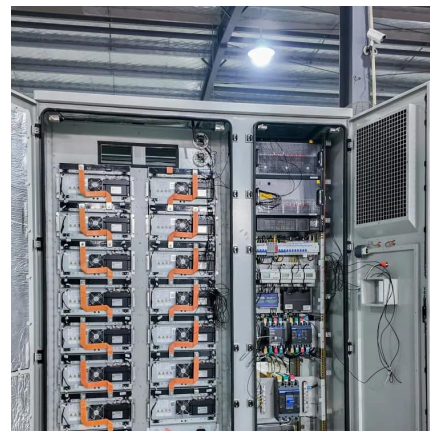
[Learn More](#)



Understanding Base Stations: The Backbone of Wireless Communication

Conclusion Base stations are the backbone of modern wireless communication networks. They ensure that mobile devices can connect to the internet, make calls, and send ...

[Learn More](#)



[What Is A Base Station?](#)

A base station is an integral component of wireless communication networks, serving as a central point that manages the transmission and reception of signals between ...

[Learn More](#)



Base Stations



Base stations are important in the cellular communication as it facilitate seamless communication between mobile devices and the network communication. The demand for efficient data transmission are increased ...

[Learn More](#)



[What is a Base Station? -- From Communication Core to ...](#)

What is a base station? Simply put, a base station (BS) is a wireless transceiver device in a mobile communication network that provides wireless coverage and communicates ...

[Learn More](#)



[What Is a Telecom Base Station and How Does It Work?](#)

A base station (BS)--short for Base Transceiver Station--is a core component of a mobile communication network. It serves as the interface between mobile devices and the operator's ...

[Learn More](#)



[What are Base Station in Telecommunications?](#)

A base station connects your phone to the network. It acts as a hub between mobile devices and the core system.

[Learn More](#)



[What is a base station?](#)



In telecommunications, a base station is a fixed transceiver that is the main communication point for one or more wireless mobile client ...

[Learn More](#)



What Is the Role of a Base Station in Wireless Communication?

Base stations are the backbone of wireless communication networks, playing a pivotal role in signal transmission, network reliability, and high-speed data connectivity. As ...

[Learn More](#)

Contact Us

For catalog requests, pricing, or partnerships, please visit:
<https://www.fundacjawandea-imk.pl>

Scan QR Code for More Information



<https://www.fundacjawandea-imk.pl>