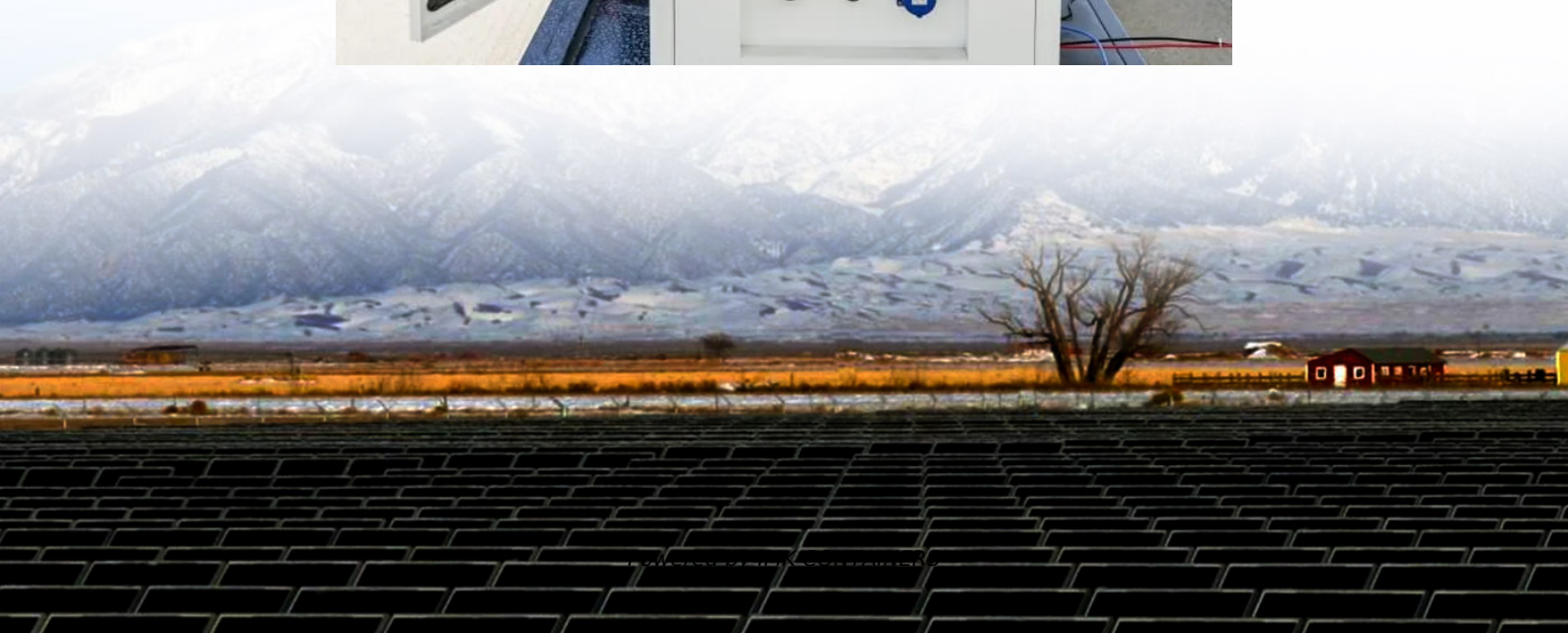


# What kind of battery is used in mobile base station equipment





## Overview

---

What types of batteries does battery station carry?

Battery Station carries an extensive line of Duracell Plus and Duracell Ultra alkaline batteries as well as lithium batteries to fit all of your consumer electronics. We also offer their NiMH rechargeable batteries and chargers to save you money over a wide range of applications, as well as specialty batteries in different technologies.

What type of battery does a telecom system need?

Beyond the commonly discussed battery types, telecom systems occasionally leverage other varieties to meet specific needs. One such option is the flow battery. These batteries excel in energy storage, making them ideal for larger installations that require consistent power over extended periods.

What kind of battery does a portable power station use?

This portable power station uses a 2,000Wh LiFePO4 battery with 3,500+ life cycles to 80% capacity. Its efficiency can be further extended to 4048Wh and 5072Wh respectively when connected to the B230 or B300 battery modules.

Are lithium-ion batteries a good choice for a telecom system?

Lithium-ion batteries have rapidly gained popularity in telecom systems. Their efficiency is unmatched, providing higher energy density compared to traditional options. This means they can store more power in a smaller footprint.



## What kind of battery is used in mobile base station equipment



### [What Kind Of Batteries Are Used in Mobile Base Stations?](#)

Under normal circumstances, there are 24 sets of mobile base station batteries in China, with a total of 48 sets in two sets. The size of the battery capacity depends on the number of users in ...

[Learn More](#)

### [How about base station energy storage batteries , NenPower](#)

This section delves into the different types of batteries commonly used in base station energy storage and evaluates their respective strengths and weaknesses. Lithium-ion ...

[Learn More](#)



### [Battery For Base Stations Of Mobile Operators in the Real](#)

As mobile networks expand and evolve, the reliance on reliable power sources for base stations becomes more critical than ever. Batteries are at the heart of this infrastructure, ...

[Learn More](#)



### [Ultimate Guide to Base Station Power Selection: Lithium vs.](#)

With the large-scale rollout of 5G networks and the rapid deployment of edge-computing base stations, the core requirements for base station power systems--stability, cost ...



[Learn More](#)



### [What Batteries Are Used in Telecom Towers?](#)

What Are Lithium Batteries For Telecom Towers? Lithium batteries for telecom towers are advanced energy storage devices that provide reliable backup power for telecom infrastructure. They ensure ...

[Learn More](#)

### [Types of Batteries Used in Telecom Systems: ...](#)

Telecom systems play a crucial role in keeping our world connected. From mobile phones to internet service providers, these networks need reliable power sources to function smoothly. That's where batteries ...

[Learn More](#)



### [How about base station energy storage ...](#)

This section delves into the different types of batteries commonly used in base station energy storage and evaluates their respective strengths and weaknesses. Lithium-ion batteries are prevalent in this ...

[Learn More](#)



## [Types of Batteries Used in Telecom Systems: A Guide](#)

Telecom systems play a crucial role in keeping our world connected. From mobile phones to internet service providers, these networks need reliable power sources to function ...

[Learn More](#)



## [What is the purpose of batteries at telecom ...](#)

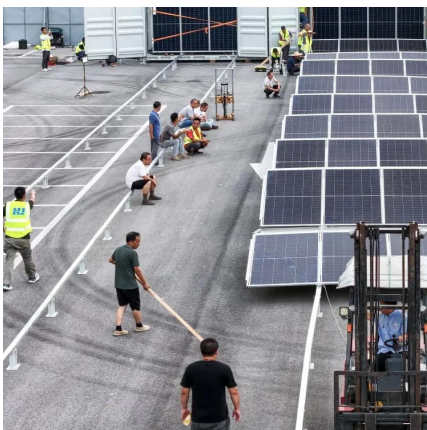
The lead storage battery is the most widely used energy storage battery in the current communication power supply. Among the many types of batteries, why can lead-acid batteries become the first choice for ...

[Learn More](#)

## [What Batteries Are Used in Telecom Towers?](#)

What Are Lithium Batteries For Telecom Towers? Lithium batteries for telecom towers are advanced energy storage devices that provide reliable backup power for telecom ...

[Learn More](#)



## [What Kind of Battery Is Used in Telecom ...](#)

At ECE Energy, we specialize in high-performance telecom battery backup systems designed for telecom base stations, ensuring seamless power supply and long service life. Why Are Batteries Essential for Telecom ...

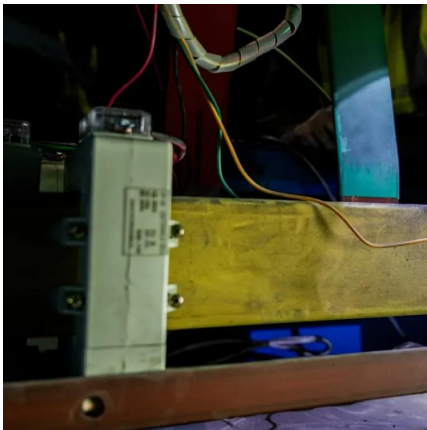
[Learn More](#)



## How to Choose the Right Backup Battery for Telecom Base Stations

Base stations commonly use 12V, 24V, or 48V battery systems. Correct voltage alignment ensures efficiency and prevents equipment damage. 48V is the industry standard for ...

[Learn More](#)



### [What is the purpose of batteries at telecom base stations?](#)

The lead storage battery is the most widely used energy storage battery in the current communication power supply. Among the many types of batteries, why can lead-acid ...

[Learn More](#)

## What Are the Key Considerations for Telecom Batteries in Base Stations?

Which Battery Types Are Used in Telecom Base Stations? VRLA and lithium-ion dominate telecom base stations. VRLA batteries are cost-effective, maintenance-free, and tolerant to ...

[Learn More](#)



### [What Kind of Battery Is Used in Telecom Towers?](#)

At ECE Energy, we specialize in high-performance telecom battery backup systems designed for telecom base stations, ensuring seamless power supply and long service life. Why Are ...

[Learn More](#)





## Contact Us

---

For catalog requests, pricing, or partnerships, please visit:  
<https://www.fundacjawandea-imk.pl>

### Scan QR Code for More Information



<https://www.fundacjawandea-imk.pl>