

# Zimbabwe pure sine wave inverter





## Zimbabwe pure sine wave inverter

---



### [Zimbabwe - ONAFHANKLIK](#)

ZIMBABWE There are also different ethnic groups in Zimbabwe and all the countries have the same problems, with tribal fights against each other, like in South Africa.

[Learn More](#)

### [explain how the disciplines of Linguistic, Anthropology](#)

Answer: explain how the disciplines of Linguistic, Anthropology, Archeology and geography have enhanced history writing on Africa using great Zimbabwe as an example

[Learn More](#)



### [Suid-Afrika vs Zimbabwe - ONAFHANKLIK](#)

Burgers moet maar kennis neem ons volg Zimbabwe met geen voedsel in vooruitsig. Hongersnood wat deur "magte" veroorsaak word. Boerderye en alle besighede het ...

[Learn More](#)



### [describe 4 common types of roofs in Zimbabwe used in ...](#)

Answer: In Zimbabwe, common roof types include gable, hip, flat, and gambrel roofs, each offering unique advantages in terms of cost, durability, and aesthetics.

[Learn More](#)



[Zimbabwe - ONAFHANKLIK](#)

ZIMBABWE There are also different ethnic groups in Zimbabwe and all the countries have the same problems, with tribal fights against each other, like in South Africa. ...

[Learn More](#)



[Why Zimbabwe not considered a democratic country](#)

Zimbabwe is not considered a democratic country because: In Zimbabwe Election held regularly but ZANU-PF party always won the election. Since the party won the elections ...

[Learn More](#)



[Suid-Afrika grens: Mosambiek Zimbabwe Lesotho Swaziland](#)

Hierdie muur wat nou die lig sien tussen Suid-Afrika, Zimbabwe, Lesotho en Mosambiek, kon al lankal in 30 jaar gerealiseer het van al die belastinginkomstes wat verkry is ...

[Learn More](#)



[Gukurahundi - Zimbabwe - ONAFHANKLIK](#)



\* Korrupsie, misdaad, verkragtings, moord en doodslag in Afrika en spesifiek in Zimbabwe. Dit moes erg getraumatiseerd gewees het omdat hul eie geliefdes voor hul ...

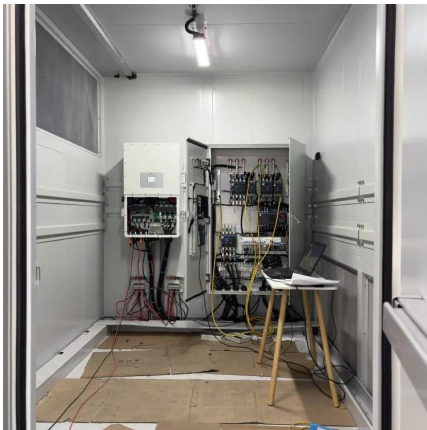
[Learn More](#)



[Write a case study on politics of Zimbabwe. \(ncert class 9\)](#)

Zimbabwe, a country located in Southern Africa, has experienced political instability and turmoil since its independence from British colonial rule in 1980. This case study ...

[Learn More](#)



[Why Zimbabwe was not a democratic country under Robert ...](#)

Answer: Zimbabwe is an African nation, that attained independence from the Whites in 1980. After its freedom, the country has been ruled by ZANU-PF a political party that ...

[Learn More](#)



## Contact Us

For catalog requests, pricing, or partnerships, please visit:  
<https://www.fundacjawandea-imk.pl>



## Scan QR Code for More Information



<https://www.fundacjawandea-imk.pl>